

Product datasheet for TP301912L

MTMR8 (NM_017677) Human Recombinant Protein

Product data:

Product Type:	Recombinant Proteins
Description:	Purified recombinant protein of Homo sapiens myotubularin related protein 8 (MTMR8), 1 mg
Species:	Human
Expression Host:	HEK293T
Expression cDNA Clone or AA Sequence:	>RC201912 protein sequence Red=Cloning site Green=Tags(s)

MDHITVPKVENVKLVDRYVSKKPANGILYLTATHLIYVEASGAARKETWIALHHIATVEKLPITSLGCPL
TLRCKNFRVAHFVLDSDLVCHEVYISLLKLSQPALPEDLYAFSYNPKSSKEMRESGWKLIDPISDFGRMG
IPNRNWTITDANRNYEICSTYPPEIVPKSVTLGTWVGSSKFRSKERVPLVSYLYKENNAICRCSQPLS
GFYTRCVDELLEAISQTNPGSQFMYVVDTRPKLNAMANRAAGKGYENEDNYANIRFRFMGIENIHVMR
SSLQKLELVCELKPTMSEFLSGLESSGWLRIKAIMDAGIFITKAVKVEKASVLVHCSDGWDRTAQVCS
VASILLDPFYRTFKGLMILIEKEWISMGHKFSQRCGHLDGDSKEVSPIFTQFLDCIWQLMEQFPCAFEFN
ENFLEIHDHVFSQFGNFLGNCQKDREDLRVYEKTHSVWPFVLRKPDFRNPLYKGFMTMYGVLNPSTVP
YNIQFWCGMYNRFDKGLQPKQSMLESLLIKKQRAMLETDVHELEKCLKVRDEPPEEICTCSQLGNILSQ
HLGSLTNPLGFMGINGDLNLTLMENGTLSREGGLRAQMDQVKSQGADLHHNCCEIVGSLRAINISGDVGI
SEAMGISGDMCTFEATGFSKDLGICGAMDISEATGISGNLGISEARGFSGDMGILGDTGISKASTKEADY
SKHQ

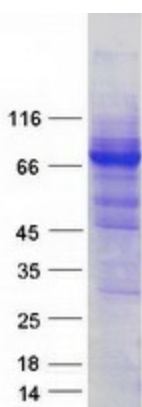
TRTRPLEQKLISEEDLAANDILDYKDDDDKV

Tag:	C-Myc/DDK
Predicted MW:	78.7 kDa
Concentration:	>0.05 µg/µL as determined by microplate BCA method
Purity:	> 80% as determined by SDS-PAGE and Coomassie blue staining
Buffer:	25 mM Tris-HCl, 100 mM glycine, pH 7.3, 10% glycerol
Preparation:	Recombinant protein was captured through anti-DDK affinity column followed by conventional chromatography steps.
Note:	For testing in cell culture applications, please filter before use. Note that you may experience some loss of protein during the filtration process.
Storage:	Store at -80°C.



[View online »](#)

Stability:	Stable for 12 months from the date of receipt of the product under proper storage and handling conditions. Avoid repeated freeze-thaw cycles.
RefSeq:	<u>NP_060147</u>
Locus ID:	55613
UniProt ID:	<u>Q96EF0</u>
RefSeq Size:	2675
Cytogenetics:	Xq11.2
RefSeq ORF:	2112
Summary:	This gene encodes a member of the myotubularin-related family and is part of the MTMR6 subgroup. Family members are dual-specificity phosphatases and the encoded protein contains a phosphoinositide-binding domain (PID) and a SET-interacting domain (SID). Defects in other family members have been found in myotubular myopathic diseases. [provided by RefSeq, Mar 2010]
Protein Families:	Druggable Genome, Phosphatase

Product images:

Coomassie blue staining of purified MTMR8 protein (Cat# [TP301912]). The protein was produced from HEK293T cells transfected with MTMR8 cDNA clone (Cat# [RC201912]) using MegaTran 2.0 (Cat# [TT210002]).