

## Product datasheet for TP301912

### MTMR8 (NM\_017677) Human Recombinant Protein

#### Product data:

Product Type:	Recombinant Proteins
Description:	Purified recombinant protein of Homo sapiens myotubularin related protein 8 (MTMR8), 20 µg
Species:	Human
Expression Host:	HEK293T
Expression cDNA Clone or AA Sequence:	>RC201912 protein sequence Red=Cloning site Green=Tags(s)

MDHITVPKVENVKLVDRYVSKKPANGILYLTATHLIYVEASGAARKETWIALHHIATVEKLPITSLGCPL  
TLRCKNFRVAHFVLDSDLVCHEVYISLLKLSQPALPEDLYAFSYNPKSSKEMRESGWKLIDPISDFGRMG  
IPNRNWTITDANRNYEICSTYPPEIVPKSVTLGTWVGSSKFRSKERVPLVSYLYKENNAICRCSQPLS  
GFYTRCVDELLEAISQTNPGSQFMVVDTRPKLNAMANRAAGKGYENEDNYANIRFRFMGIENIHVMR  
SSLQKLELVCELKPTMSEFLSGLESSGWLRIKAIMDAGIFITKAVKVEKASVLVHCSDGWDRTAQVCS  
VASILLDPFYRTFKGLMILIEKEWISMGHKFSQRCGHLDGDSKEVSPIFTQLDCIWQLMEQFPCAFEFN  
ENFLEIHDHVFSQFGNFLGNCQKDREDLRVYEKTHSVWPFVLRKPDFRNPLYKGFMTMYGVLNPSTVP  
YNIQFWCGMYNRFDKGLQPKQSMLESLLIKKQRAMLETDVHELEKCLKVRDEPPEEICTCSQLGNILSQ  
HLGSLTNPLGFMINGDLNLTLMENGLSREGGLRAQMDQVKSQGADLHHNCCEIVGSLRAINISGDVGI  
SEAMGISGDMCTFEATGFSKDLGICGAMDISEATGISGNLGISEARGFSGDMGILGDTGISKASTKEADY  
SKHQ

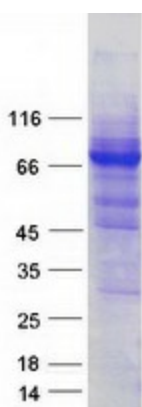
TRTRPLEQKLISEEDLAANDILDYKDDDDKV

Tag:	C-Myc/DDK
Predicted MW:	78.7 kDa
Concentration:	>0.05 µg/µL as determined by microplate BCA method
Purity:	> 80% as determined by SDS-PAGE and Coomassie blue staining
Buffer:	25 mM Tris-HCl, 100 mM glycine, pH 7.3, 10% glycerol
Preparation:	Recombinant protein was captured through anti-DDK affinity column followed by conventional chromatography steps.
Note:	For testing in cell culture applications, please filter before use. Note that you may experience some loss of protein during the filtration process.
Storage:	Store at -80°C.



[View online »](#)

<b>Stability:</b>	Stable for 12 months from the date of receipt of the product under proper storage and handling conditions. Avoid repeated freeze-thaw cycles.
<b>RefSeq:</b>	<a href="#">NP_060147</a>
<b>Locus ID:</b>	55613
<b>UniProt ID:</b>	<a href="#">Q96EF0</a>
<b>RefSeq Size:</b>	2675
<b>Cytogenetics:</b>	Xq11.2
<b>RefSeq ORF:</b>	2112
<b>Summary:</b>	This gene encodes a member of the myotubularin-related family and is part of the MTMR6 subgroup. Family members are dual-specificity phosphatases and the encoded protein contains a phosphoinositide-binding domain (PID) and a SET-interacting domain (SID). Defects in other family members have been found in myotubular myopathic diseases. [provided by RefSeq, Mar 2010]
<b>Protein Families:</b>	Druggable Genome, Phosphatase

**Product images:**

Coomassie blue staining of purified MTMR8 protein (Cat# TP301912). The protein was produced from HEK293T cells transfected with MTMR8 cDNA clone (Cat# [RC201912]) using MegaTran 2.0 (Cat# [TT210002]).