

## Product datasheet for **TP301903L**

### **PINX1 (NM\_017884) Human Recombinant Protein**

#### **Product data:**

**Product Type:** Recombinant Proteins

**Description:** Recombinant protein of human PIN2-interacting protein 1 (PINX1), 1 mg

**Species:** Human

**Expression Host:** HEK293T

**Expression cDNA** >RC201903 protein sequence

**Clone or AA** **Red**=Cloning site **Green**=Tags(s)

**Sequence:**

MSMLAERRRKQKWAVDPQNTAWSNDDSKFGQRMLEKMGWSKGKGLGAQEHGATDHIKVVQKNNHLGLGAT  
INNEDNWIAHQDDFNQLLAE LNTCHGQETDSSDKKEKKSFSLEEKSKISKNRVHYMKFTKGKDLSSRSK  
TDLDCIFGKRQSKKTPEGDASPSTPEENETTTTSAFTIQEYFAKRMAALKNKPQVPVPGSDISETQVERK  
RGKKINKEATGKDVESYLQPKAKRHTEGKPERAEAQERVAKKKSAPAEELRGPCWDQSSKASAQDAGDH  
VQPPEGRDFTLKP KRRGKKKLQKPVEIAEDATLEETLVKKKKKKDSK

**TRTRPLEQKLISEEDLAANDILDYKDDDDKVK**

**Tag:** C-Myc/DDK

**Predicted MW:** 36.9 kDa

**Concentration:** >0.05 µg/µL as determined by microplate BCA method

**Purity:** > 80% as determined by SDS-PAGE and Coomassie blue staining

**Buffer:** 25 mM Tris-HCl, 100 mM glycine, pH 7.3, 10% glycerol

**Preparation:** Recombinant protein was captured through anti-DDK affinity column followed by conventional chromatography steps.

**Note:** For testing in cell culture applications, please filter before use. Note that you may experience some loss of protein during the filtration process.

**Storage:** Store at -80°C.

**Stability:** Stable for 12 months from the date of receipt of the product under proper storage and handling conditions. Avoid repeated freeze-thaw cycles.

**RefSeq:** [NP\\_060354](#)

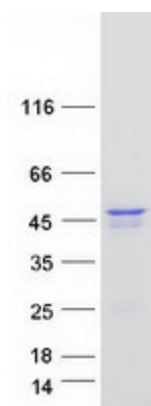
**Locus ID:** 54984



[View online »](#)

UniProt ID:	<a href="#">Q96BK5</a>
RefSeq Size:	1570
Cytogenetics:	8p23.1
RefSeq ORF:	984
Synonyms:	Gno1; LPTL; LPTS; Pxr1
Summary:	Microtubule-binding protein essential for faithful chromosome segregation. Mediates TRF1 and TERT accumulation in nucleolus and enhances TRF1 binding to telomeres. Inhibits telomerase activity. May inhibit cell proliferation and act as tumor suppressor.[UniProtKB/Swiss-Prot Function]

### Product images:



Coomassie blue staining of purified PINX1 protein (Cat# [TP301903]). The protein was produced from HEK293T cells transfected with PINX1 cDNA clone (Cat# [RC201903]) using MegaTran 2.0 (Cat# [TT210002]).