

Product datasheet for **TP301903**

PINX1 (NM_017884) Human Recombinant Protein

Product data:

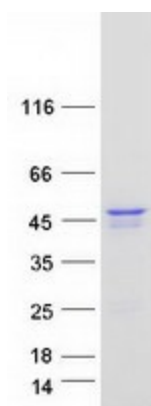
Product Type:	Recombinant Proteins
Description:	Recombinant protein of human PIN2-interacting protein 1 (PINX1), 20 µg
Species:	Human
Expression Host:	HEK293T
Expression cDNA Clone or AA Sequence:	>RC201903 protein sequence Red =Cloning site Green =Tags(s) MSMLAERRRKQKWAVDPQNTAWSNDDSKFGQRMLEKMGWSKGKGLGAQEHGATDHIKVVQKNNHLGLGAT INNEDNWIAHQDDFNQLLAE LNTCHGQETDSSDKKEKKSFSLEEKSKISKNRVHYMKFTKGKDLSSRSK TDLDCIFGKRQSKKTPEGDASPSTPEENETTTTSAFTIQEYFAKRMAALKNKPQVPVPGSDISETQVERK RGKKINKEATGKDVESYLQPKAKRHTEGKPERAEAQERVAKKKSAPAEELRGPCWDQSSKASAQDAGDH VQPPEGRDFTLKP KRRGKKKLQKPVEIAEDATLEETLVKKKKKDKS TRTRPLEQKLISEEDLAANDILDYKDDDDKV
Tag:	C-Myc/DDK
Predicted MW:	36.9 kDa
Concentration:	>0.05 µg/µL as determined by microplate BCA method
Purity:	> 80% as determined by SDS-PAGE and Coomassie blue staining
Buffer:	25 mM Tris-HCl, 100 mM glycine, pH 7.3, 10% glycerol
Preparation:	Recombinant protein was captured through anti-DDK affinity column followed by conventional chromatography steps.
Note:	For testing in cell culture applications, please filter before use. Note that you may experience some loss of protein during the filtration process.
Storage:	Store at -80°C.
Stability:	Stable for 12 months from the date of receipt of the product under proper storage and handling conditions. Avoid repeated freeze-thaw cycles.
RefSeq:	<u>NP_060354</u>
Locus ID:	54984



[View online »](#)

UniProt ID:	Q96BK5
RefSeq Size:	1570
Cytogenetics:	8p23.1
RefSeq ORF:	984
Synonyms:	Gno1; LPTL; LPTS; Pxr1
Summary:	Microtubule-binding protein essential for faithful chromosome segregation. Mediates TRF1 and TERT accumulation in nucleolus and enhances TRF1 binding to telomeres. Inhibits telomerase activity. May inhibit cell proliferation and act as tumor suppressor.[UniProtKB/Swiss-Prot Function]

Product images:



Coomassie blue staining of purified PINX1 protein (Cat# TP301903). The protein was produced from HEK293T cells transfected with PINX1 cDNA clone (Cat# [RC201903]) using MegaTran 2.0 (Cat# [TT210002]).