

Product datasheet for **TP301899M**

Tapasin Related Protein (TAPBPL) (NM_018009) Human Recombinant Protein

Product data:

Product Type: Recombinant Proteins

Description: Recombinant protein of human TAP binding protein-like (TAPBPL), 100 µg

Species: Human

Expression Host: HEK293T

**Expression cDNA Clone
or AA Sequence:** >RC201899 protein sequence
Red=Cloning site **Green**=Tags(s)

MGTQEGWCLLLCLALSGAAETKPHPAEGQWRAVDVWLDLFLVKDGAHRGALASSEDRARASLVLKQVPVL
DDGSLEDFDFQGGTLAGDDPPIIFEASVDLVQIPQAEALLHADCSGKEVTCEISRYFLQMTETTVKTA
WFMANVQVSGGGPSISLVMKTPRVAKNEVLWHPTLNPLSPQGTVRTAVEFQVMTQTQSLFLLGSSASL
DCGFMAPGLDLISVEWRLQHKGRGQLVYSWTAGQGQAVRKGATLEPAQLGMARDASLTLPLGLTIQDEGT
YICQITTSLYRAQQIIQLNIQASPKVRLSLANEALLPTLICDIAGYPLDVVVTWTRRELGGSPAQVSGA
SFSSLRQSVAGTYSISSSLTAEPGSAGATYTCQVTHISLEEPLGASTQVWPPERRTALGVIFASSLFLLA
LMFLGLQRRQAPTGLGLLQAERWETTSCADTQSSHLHEDRTARVSQPS

TRTRPLEQKLISEEDLAANDILDYKDDDDKV

Tag: C-Myc/DDK

Predicted MW: 50 kDa

Concentration: >0.05 µg/µL as determined by microplate BCA method

Purity: > 80% as determined by SDS-PAGE and Coomassie blue staining

Buffer: 25 mM Tris-HCl, 100 mM glycine, pH 7.3, 10% glycerol

Preparation: Recombinant protein was captured through anti-DDK affinity column followed by conventional chromatography steps.

Note: For testing in cell culture applications, please filter before use. Note that you may experience some loss of protein during the filtration process.

Storage: Store at -80°C.

Stability: Stable for 12 months from the date of receipt of the product under proper storage and handling conditions. Avoid repeated freeze-thaw cycles.

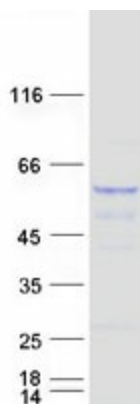
RefSeq: [NP_060479](#)



[View online »](#)

Locus ID:	55080
UniProt ID:	Q9BX59
RefSeq Size:	1834
Cytogenetics:	12p13.31
RefSeq ORF:	1404
Synonyms:	TAPBP-R; TAPBPR
Summary:	Tapasin, or TAPBP (MIM 601962), is a member of the variable-constant Ig superfamily that links major histocompatibility complex (MHC) class I molecules to the transporter associated with antigen processing (TAP; see MIM 170260) in the endoplasmic reticulum (ER). The TAPBP gene is located near the MHC complex on chromosome 6p21.3. TAPBPL is a member of the Ig superfamily that is localized on chromosome 12p13.3, a region somewhat paralogous to the MHC.[supplied by OMIM, Mar 2008]
Protein Families:	Druggable Genome, Transmembrane

Product images:



Coomassie blue staining of purified TAPBPL protein (Cat# [TP301899]). The protein was produced from HEK293T cells transfected with TAPBPL cDNA clone (Cat# [RC201899]) using MegaTran 2.0 (Cat# [TT210002]).