

## Product datasheet for **TP301899L**

### Tapasin Related Protein (TAPBPL) (NM\_018009) Human Recombinant Protein

#### Product data:

**Product Type:** Recombinant Proteins

**Description:** Recombinant protein of human TAP binding protein-like (TAPBPL), 1 mg

**Species:** Human

**Expression Host:** HEK293T

**Expression cDNA Clone or AA Sequence:** >RC201899 protein sequence  
**Red**=Cloning site **Green**=Tags(s)

MGTQEGWCLLLCLALSGAAETKPHPAEGQWRAVDVWLDLFLVKGDAHRGALASSEDRARASLVLKQVPVL  
DDGSLEDFDFQGGTLAGDDPPIIFEASVDLVQIPQAEALLHADCSGKEVTCEISRYFLQMTETTVKTA  
WFMANVQVSGGGPSISLVMKTPRVAKNEVLWHPTLNPLSPQGTVRTAVEFQVMTQTQSLFLLGSSASL  
DCGFMAPGLDLISVEWRLQHKGRGQLVYSWTAGQGQAVRKGATLEPAQLGMARDASLTLPLGLTIQDEGT  
YICQITTSLYRAQQIIQLNIQASPKVRLSLANEALLPTLICDIAGYPLDVVVTWTRRELGGSPAQVSGA  
SFSSLRQSVAGTYSISSSLTAEPGSAGATYTCQVTHISLEEPLGASTQVWPPERRTALGVIFASSLFLLA  
LMFLGLQRRQAPTGLGLLQAERWETTSCADTQSSHLHEDRTARVSQPS

**TRTRPLEQKLISEEDLAANDILDYKDDDDKV**

**Tag:** C-Myc/DDK

**Predicted MW:** 50 kDa

**Concentration:** >0.05 µg/µL as determined by microplate BCA method

**Purity:** > 80% as determined by SDS-PAGE and Coomassie blue staining

**Buffer:** 25 mM Tris-HCl, 100 mM glycine, pH 7.3, 10% glycerol

**Preparation:** Recombinant protein was captured through anti-DDK affinity column followed by conventional chromatography steps.

**Note:** For testing in cell culture applications, please filter before use. Note that you may experience some loss of protein during the filtration process.

**Storage:** Store at -80°C.

**Stability:** Stable for 12 months from the date of receipt of the product under proper storage and handling conditions. Avoid repeated freeze-thaw cycles.

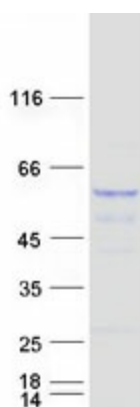
**RefSeq:** [NP\\_060479](#)



[View online »](#)

Locus ID:	55080
UniProt ID:	<a href="#">Q9BX59</a>
RefSeq Size:	1834
Cytogenetics:	12p13.31
RefSeq ORF:	1404
Synonyms:	TAPBP-R; TAPBPR
Summary:	Tapasin, or TAPBP (MIM 601962), is a member of the variable-constant Ig superfamily that links major histocompatibility complex (MHC) class I molecules to the transporter associated with antigen processing (TAP; see MIM 170260) in the endoplasmic reticulum (ER). The TAPBP gene is located near the MHC complex on chromosome 6p21.3. TAPBPL is a member of the Ig superfamily that is localized on chromosome 12p13.3, a region somewhat paralogous to the MHC.[supplied by OMIM, Mar 2008]
Protein Families:	Druggable Genome, Transmembrane

### Product images:



Coomassie blue staining of purified TAPBPL protein (Cat# [TP301899]). The protein was produced from HEK293T cells transfected with TAPBPL cDNA clone (Cat# [RC201899]) using MegaTran 2.0 (Cat# [TT210002]).