

Product datasheet for TP301893M

CLIC4 (NM_013943) Human Recombinant Protein

Product data:

Product Type:	Recombinant Proteins
Description:	Recombinant protein of human chloride intracellular channel 4 (CLIC4), nuclear gene encoding mitochondrial protein, 100 µg
Species:	Human
Expression Host:	HEK293T
Expression cDNA Clone or AA Sequence:	>RC201893 protein sequence Red =Cloning site Green =Tags(s)
	MALSMPLNGLKEEDKEPLIELFVKAGSDGESIGNCPFSQRLFMILWLKGVFVSTTVDLKRKPADLQNLAPGTHPPFITFNSEVKTDVKNKIEEFLEEVLCPPKYLKLSPKHPESNTAGMDIFAKFSAYIKNSRPEANEALERGLLKTQLKDEYLN SPLPDEIDENSMEDIKFSTRKFLDGNEMTLADCNLLPKLHIVKVVAKKYRNFDPKEMTGIWRYLTNAYS RDEFTNTCPSDKEVEIAYS DVAKRLTK
	TRTRPLEQKLISEEDLAANDILDYKDDDDKV
Tag:	C-Myc/DDK
Predicted MW:	28.6 kDa
Concentration:	>0.05 µg/µL as determined by microplate BCA method
Purity:	> 80% as determined by SDS-PAGE and Coomassie blue staining
Buffer:	25 mM Tris-HCl, 100 mM glycine, pH 7.3, 10% glycerol
Preparation:	Recombinant protein was captured through anti-DDK affinity column followed by conventional chromatography steps.
Note:	For testing in cell culture applications, please filter before use. Note that you may experience some loss of protein during the filtration process.
Storage:	Store at -80°C.
Stability:	Stable for 12 months from the date of receipt of the product under proper storage and handling conditions. Avoid repeated freeze-thaw cycles.
RefSeq:	NP_039234
Locus ID:	25932



[View online »](#)

UniProt ID: [Q9Y696](#), [Q6FIC5](#)

RefSeq Size: 4452

Cytogenetics: 1p36.11

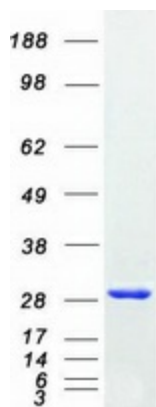
RefSeq ORF: 759

Synonyms: CLIC4L; H1; huH1; MTCLIC; p64H1

Summary: Chloride channels are a diverse group of proteins that regulate fundamental cellular processes including stabilization of cell membrane potential, transepithelial transport, maintenance of intracellular pH, and regulation of cell volume. Chloride intracellular channel 4 (CLIC4) protein, encoded by the CLIC4 gene, is a member of the p64 family; the gene is expressed in many tissues and exhibits a intracellular vesicular pattern in Panc-1 cells (pancreatic cancer cells). [provided by RefSeq, Jul 2008]

Protein Families: Druggable Genome, Ion Channels: Other

Product images:



Coomassie blue staining of purified CLIC4 protein (Cat# [TP301893]). The protein was produced from HEK293T cells transfected with CLIC4 cDNA clone (Cat# [RC201893]) using MegaTran 2.0 (Cat# [TT210002]).