

Product datasheet for **TP301893L**

CLIC4 (NM_013943) Human Recombinant Protein

Product data:

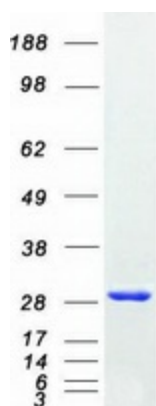
Product Type:	Recombinant Proteins
Description:	Recombinant protein of human chloride intracellular channel 4 (CLIC4), nuclear gene encoding mitochondrial protein, 1 mg
Species:	Human
Expression Host:	HEK293T
Expression cDNA Clone or AA Sequence:	>RC201893 protein sequence Red =Cloning site Green =Tags(s)
	<p>MALSMPNLNGLKEEDKEPLIELFVKAGSDGESIGNCPFSQRLFMILWLKGVFSVTTVDLKRKPADLQNLAPGTHPPFITFNSEVKTDVKNKIEEFLEEVLCPPKYLKLSPKHPESNTAGMDIFAKFSAYIKNSRPEANEALERGLLKTQLKDEYLN SPLPDEIDENS MEDIKFSTRKFLDGNEMTLADCNLLPKLHIVKVVAKKYRNFDPKEMTGIWRYLTNAYS RDEFTNTCP SDKEVEIAYS DVAKRLTK</p> <p>TRTRPLEQKLISEEDLAANDILDYKDDDDKV</p>
Tag:	C-Myc/DDK
Predicted MW:	28.6 kDa
Concentration:	>0.05 µg/µL as determined by microplate BCA method
Purity:	> 80% as determined by SDS-PAGE and Coomassie blue staining
Buffer:	25 mM Tris-HCl, 100 mM glycine, pH 7.3, 10% glycerol
Preparation:	Recombinant protein was captured through anti-DDK affinity column followed by conventional chromatography steps.
Note:	For testing in cell culture applications, please filter before use. Note that you may experience some loss of protein during the filtration process.
Storage:	Store at -80°C.
Stability:	Stable for 12 months from the date of receipt of the product under proper storage and handling conditions. Avoid repeated freeze-thaw cycles.
RefSeq:	NP_039234
Locus ID:	25932



[View online »](#)

UniProt ID:	Q9Y696 , Q6FIC5
RefSeq Size:	4452
Cytogenetics:	1p36.11
RefSeq ORF:	759
Synonyms:	CLIC4L; H1; huH1; MTCLIC; p64H1
Summary:	Chloride channels are a diverse group of proteins that regulate fundamental cellular processes including stabilization of cell membrane potential, transepithelial transport, maintenance of intracellular pH, and regulation of cell volume. Chloride intracellular channel 4 (CLIC4) protein, encoded by the CLIC4 gene, is a member of the p64 family; the gene is expressed in many tissues and exhibits a intracellular vesicular pattern in Panc-1 cells (pancreatic cancer cells). [provided by RefSeq, Jul 2008]
Protein Families:	Druggable Genome, Ion Channels: Other

Product images:



Coomassie blue staining of purified CLIC4 protein (Cat# [TP301893]). The protein was produced from HEK293T cells transfected with CLIC4 cDNA clone (Cat# [RC201893]) using MegaTran 2.0 (Cat# [TT210002]).