

Product datasheet for **TP301893**

CLIC4 (NM_013943) Human Recombinant Protein

Product data:

Product Type: Recombinant Proteins

Description: Recombinant protein of human chloride intracellular channel 4 (CLIC4), nuclear gene encoding mitochondrial protein, 20 µg

Species: Human

Expression Host: HEK293T

Expression cDNA Clone or AA Sequence: >RC201893 protein sequence
Red=Cloning site **Green**=Tags(s)

MALSMPLNGLKEEDKEPLIELFVKAGSDGESIGNCPFSQQLFMILWLKGVVFSVTTVDLKRKPADLQNLAPGTHPPFITNSEVKTDVFNKIEEFLEEVLCPPKYLKLSPKHPESNTAGMDIFAKFSAYIKNSRPEANEALERGLLKTLLQKLDEYLNPLPDEIDENSMEDIKFSTRKFLDGNEMTLADCNLLPKLHIVKVVAKKYRNFDPKEMTGIWRYLTNAYS RDEFTNTCPSDKEVEIAYS DVAKRLTK

TRTRPLEQKLISEEDLAANDILDYKDDDDKV

Tag: C-Myc/DDK

Predicted MW: 28.6 kDa

Concentration: >0.05 µg/µL as determined by microplate BCA method

Purity: > 80% as determined by SDS-PAGE and Coomassie blue staining

Buffer: 25 mM Tris-HCl, 100 mM glycine, pH 7.3, 10% glycerol

Preparation: Recombinant protein was captured through anti-DDK affinity column followed by conventional chromatography steps.

Note: For testing in cell culture applications, please filter before use. Note that you may experience some loss of protein during the filtration process.

Storage: Store at -80°C.

Stability: Stable for 12 months from the date of receipt of the product under proper storage and handling conditions. Avoid repeated freeze-thaw cycles.

RefSeq: [NP_039234](#)

Locus ID: 25932



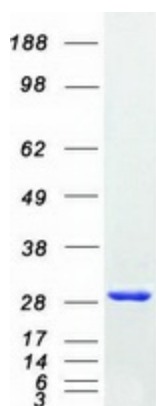
[View online »](#)

UniProt ID: [Q9Y696](#)
RefSeq Size: 4452
Cytogenetics: 1p36.11
RefSeq ORF: 759
Synonyms: CLIC4L; H1; huH1; MTCLIC; p64H1

Summary: Chloride channels are a diverse group of proteins that regulate fundamental cellular processes including stabilization of cell membrane potential, transepithelial transport, maintenance of intracellular pH, and regulation of cell volume. Chloride intracellular channel 4 (CLIC4) protein, encoded by the CLIC4 gene, is a member of the p64 family; the gene is expressed in many tissues and exhibits a intracellular vesicular pattern in Panc-1 cells (pancreatic cancer cells). [provided by RefSeq, Jul 2008]

Protein Families: Druggable Genome, Ion Channels: Other

Product images:



Coomassie blue staining of purified CLIC4 protein (Cat# TP301893). The protein was produced from HEK293T cells transfected with CLIC4 cDNA clone (Cat# [RC201893]) using MegaTran 2.0 (Cat# [TT210002]).