

## Product datasheet for **TP301852L**

### katanin p80 (KATNB1) (NM\_005886) Human Recombinant Protein

#### Product data:

Product Type:	Recombinant Proteins
Description:	Recombinant protein of human katanin p80 (WD repeat containing) subunit B 1 (KATNB1), 1 mg
Species:	Human
Expression Host:	HEK293T
Expression cDNA Clone or AA Sequence:	>RC201852 protein sequence Red=Cloning site Green=Tags(s)

MATPVVTKTAWKLQEIVAHASNVSSLVLGKASGRLLATGGDDCRVNLWSINKPNCIMSLTGHTSPVESVR  
LNTPEELIVAGSQSGSIRVWDLEAAKILRTLGMGHKANICSLDFHPYGEFVASGSQDTNIKLDIRRKGCV  
FRYRGHSQAVRCLRFSPDGKWLASAADDHTVKLWDLTAGKMMSEFPGHTGPVNVVEFHPNEYLLASGSSD  
RTIRFDWLEKFQVWSCIEGEPGPVRSVLFNPDGCCLYSGCQDSLRYGWEPERCFDVLVNWGKVADLAI  
CNDQLIGVAFSQSNVSSVVDLTRVTRTGTVARDPVQDHRPLAQPLNPSAPLRRRIYERPSTTCSKPQRV  
KQNSEERRSPSEDDRDERESRAEIQNAEDYNEIFQPKNSISRTPPRRSEFPAPPEDDAATAKEAAKP  
SPAMDVQFPVPLEVLPRPPVASTPAPKAEPPIIPATRNEPIGLKASDFLPAVKIPQQAEVDEDAMSQ  
IRKGHDTMCVLTSRHKNLDTVRAVWTMGDIKTSVDSAVAINDSLVSVDLLNIVNQASLWKLDLCTTVL  
PQIEKLLQSKYESVQTGCTSLKILQRFLPLITDMLAAPPVSGVDISREERLHKRCCLYKQLKSISGLV  
KSKSGLSGRHGSTFRELHLLMASLD

SGPTRTRPLEQKLISEEDLAANDILDYKDDDDKV

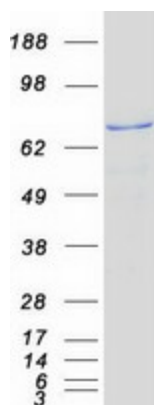
Tag:	C-Myc/DDK
Predicted MW:	72.2 kDa
Concentration:	>0.05 µg/µL as determined by microplate BCA method
Purity:	> 80% as determined by SDS-PAGE and Coomassie blue staining
Buffer:	25 mM Tris-HCl, 100 mM glycine, pH 7.3, 10% glycerol
Preparation:	Recombinant protein was captured through anti-DDK affinity column followed by conventional chromatography steps.
Note:	For testing in cell culture applications, please filter before use. Note that you may experience some loss of protein during the filtration process.
Storage:	Store at -80°C.



[View online »](#)

<b>Stability:</b>	Stable for 12 months from the date of receipt of the product under proper storage and handling conditions. Avoid repeated freeze-thaw cycles.
<b>RefSeq:</b>	<a href="#">NP_005877</a>
<b>Locus ID:</b>	10300
<b>UniProt ID:</b>	<a href="#">Q9BVA0</a>
<b>RefSeq Size:</b>	2661
<b>Cytogenetics:</b>	16q21
<b>RefSeq ORF:</b>	1965
<b>Synonyms:</b>	KAT; LIS6
<b>Summary:</b>	Microtubules, polymers of alpha and beta tubulin subunits, form the mitotic spindle of a dividing cell and help to organize membranous organelles during interphase. Katanin is a heterodimer that consists of a 60 kDa ATPase (p60 subunit A 1) and an 80 kDa accessory protein (p80 subunit B 1). The p60 subunit acts to sever and disassemble microtubules, while the p80 subunit targets the enzyme to the centrosome. Katanin is a member of the AAA family of ATPases. [provided by RefSeq, Jul 2008]

### Product images:



Coomassie blue staining of purified KATNB1 protein (Cat# [TP301852]). The protein was produced from HEK293T cells transfected with KATNB1 cDNA clone (Cat# [RC201852]) using MegaTran 2.0 (Cat# [TT210002]).