

Product datasheet for TP301851L

NAP1L1 (NM_139207) Human Recombinant Protein

Product data:

Product Type:	Recombinant Proteins
Description:	Recombinant protein of human nucleosome assembly protein 1-like 1 (NAP1L1), transcript variant 1, 1 mg
Species:	Human
Expression Host:	HEK293T
Expression cDNA Clone or AA Sequence:	>RC201851 protein sequence Red=Cloning site Green=Tags(s)

MADIDNKEQSELDQDLDDVEEVEEEETGEETKLKARQLTVQMMQNPQILAALQERLDGLVETPTGYIESL
PRVVKRRVNALKNLQVKCAQIEAKFYEEVHDLERKYAVLYQPLFDKRFIINAIYEPTEECEWKPDEED
EISEELKEKAKIEDEKKDEEKEDPKGIPEFWLTVFKNVDLLSDMVQEHDEPILKHLKDIKVKFSDAGQPM
SFVLEFHFEFNEYFTNEVLTKTYRMRSEPDSDPFSFDGPEIMGCTGCQIDWKKGKNVLTIKTIKKQKHK
GRGTVRTVTKTVSNDSFFNFFAPPEVPESGDLDDDAEAILAADFEIGHFLRERIIPRSVLYFTGEAIEDD
DDDYDEEGEEADEEGEEEGDEENDPDYDPKKDQNPAAECKQQ

TRTRPLEQKLISEEDLAANDILDYKDDDDKV

Tag:	C-Myc/DDK
Predicted MW:	45.2 kDa
Concentration:	>0.05 µg/µL as determined by microplate BCA method
Purity:	> 80% as determined by SDS-PAGE and Coomassie blue staining
Buffer:	25 mM Tris-HCl, 100 mM glycine, pH 7.3, 10% glycerol
Preparation:	Recombinant protein was captured through anti-DDK affinity column followed by conventional chromatography steps.
Note:	For testing in cell culture applications, please filter before use. Note that you may experience some loss of protein during the filtration process.
Storage:	Store at -80°C.
Stability:	Stable for 12 months from the date of receipt of the product under proper storage and handling conditions. Avoid repeated freeze-thaw cycles.
RefSeq:	<u>NP_631946</u>



[View online »](#)

Locus ID: 4673

UniProt ID: [P55209](#), [A0A024RBB7](#), [Q9H2B0](#)

RefSeq Size: 4451

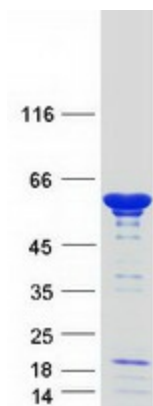
Cytogenetics: 12q21.2

RefSeq ORF: 1173

Synonyms: NAP1; NAP1L; NRP

Summary: This gene encodes a member of the nucleosome assembly protein (NAP) family. This protein participates in DNA replication and may play a role in modulating chromatin formation and contribute to the regulation of cell proliferation. Alternative splicing results in multiple transcript variants encoding different isoforms; however, not all have been fully described. [provided by RefSeq, Apr 2015]

Product images:



Coomassie blue staining of purified NAP1L1 protein (Cat# [TP301851]). The protein was produced from HEK293T cells transfected with NAP1L1 cDNA clone (Cat# [RC201851]) using MegaTran 2.0 (Cat# [TT210002]).