

## Product datasheet for TP301832L

### MRPL12 (NM\_002949) Human Recombinant Protein

#### Product data:

Product Type:	Recombinant Proteins
Description:	Recombinant protein of human mitochondrial ribosomal protein L12 (MRPL12), nuclear gene encoding mitochondrial protein, 1 mg
Species:	Human
Expression Host:	HEK293T
Expression cDNA Clone or AA Sequence:	>RC201832 protein sequence <span style="color: red;">Red</span> =Cloning site <span style="color: green;">Green</span> =Tags(s)  MLPAAARPLWGPCGLRAAAFRLARRQVPCVCAVRHMRSSGHQRCEALAGAPLDNAPKEYPPKIQQLV QD IASLTLEISDLNELLKKTLLKIQDVGLVPMGGVMSGAVPAAAAQEAVEEDIPIAKERTHFTVRLTEAKPV DKVKLIKEIKNYIQGINLVQAKKLVESLPQEIKANVAKAEAEKIKAALEAVGGTVVLE  <span style="color: red;">TR</span> <span style="color: green;">TRPLEQKLISEEDLAANDILDYKDDDDKV</span>
Tag:	C-Myc/DDK
Predicted MW:	21.2 kDa
Concentration:	>0.05 µg/µL as determined by microplate BCA method
Purity:	> 80% as determined by SDS-PAGE and Coomassie blue staining
Buffer:	25 mM Tris-HCl, 100 mM glycine, pH 7.3, 10% glycerol
Preparation:	Recombinant protein was captured through anti-DDK affinity column followed by conventional chromatography steps.
Note:	For testing in cell culture applications, please filter before use. Note that you may experience some loss of protein during the filtration process.
Storage:	Store at -80°C.
Stability:	Stable for 12 months from the date of receipt of the product under proper storage and handling conditions. Avoid repeated freeze-thaw cycles.
RefSeq:	<u><a href="#">NP_002940</a></u>
Locus ID:	6182


[View online »](#)

UniProt ID: [P52815](#)

RefSeq Size: 1032

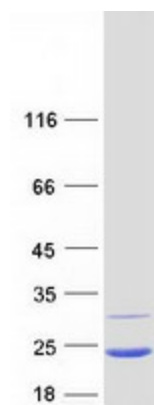
Cytogenetics: 17q25.3

RefSeq ORF: 594

Synonyms: 5c5-2; L12mt; MRP-L31/34; MRPL7; MRPL7/L12; RPML12

**Summary:** Mammalian mitochondrial ribosomal proteins are encoded by nuclear genes and help in protein synthesis within the mitochondrion. Mitochondrial ribosomes (mitoribosomes) consist of a small 28S subunit and a large 39S subunit. They have an estimated 75% protein to rRNA composition compared to prokaryotic ribosomes, where this ratio is reversed. Another difference between mammalian mitoribosomes and prokaryotic ribosomes is that the latter contain a 5S rRNA. Among different species, the proteins comprising the mitoribosome differ greatly in sequence, and sometimes in biochemical properties, which prevents easy recognition by sequence homology. This gene encodes a 39S subunit protein which forms homodimers. In prokaryotic ribosomes, two L7/L12 dimers and one L10 protein form the L8 protein complex. [provided by RefSeq, Jul 2008]

## Product images:



Coomassie blue staining of purified MRPL12 protein (Cat# [TP301832]). The protein was produced from HEK293T cells transfected with MRPL12 cDNA clone (Cat# [RC201832]) using MegaTran 2.0 (Cat# [TT210002]).