

## Product datasheet for TP301827

### MEK2 (MAP2K2) (NM\_030662) Human Recombinant Protein

#### Product data:

**Product Type:** Recombinant Proteins  
**Description:** Recombinant protein of human mitogen-activated protein kinase kinase 2 (MAP2K2), 20 µg  
**Species:** Human  
**Expression Host:** HEK293T  
**Expression cDNA Clone or AA Sequence:** >RC201827 representing NM\_030662  
Red=Cloning site Green=Tags(s)

MLARRKPVLPALTINPTIAEGPSPTSEGASEANLVDLQKKLEELDEQQKRLEAFLTQKAKVGELKDD  
 DFERISELGAGNGGVTKVQHRPSGLIMARKLIHLEIKPAIRNQIIRELQVLHECNSPYIVGFYGFYSD  
 GEISICMEHMDGGSLDQVLKEAKRIPEEILGKVSIAVLRGLAYLREKHQIMHRDVKPSNILVNSRGEIKL  
 CDFGVSGQLIDSMANSFVGTRSYMAPERLQGTHYSVQSDIWSMGLSLVELAVGRYPPIPPDAKELEAIFG  
 RPVVDGEEGEPHSISPRPRPPGRPVSGHGMDSRPAMAIFELLDYIVNEPPPPLPNGVFTPDFQEFVNKCL  
 IKNPAERADLKMLTNHTFIKRSEVEEVDFAFWLCKTLRLNQPPTRTAV

TRTRPLEQKLISEEDLAANDILDYKDDDDKV

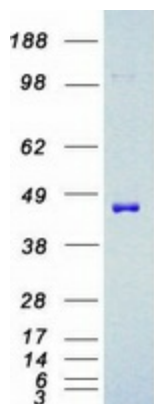
**Tag:** C-Myc/DDK  
**Predicted MW:** 44.2 kDa  
**Concentration:** >0.05 µg/µL as determined by microplate BCA method  
**Purity:** > 80% as determined by SDS-PAGE and Coomassie blue staining  
**Buffer:** 25 mM Tris-HCl, 100 mM glycine, pH 7.3, 10% glycerol  
**Preparation:** Recombinant protein was captured through anti-DDK affinity column followed by conventional chromatography steps.  
**Note:** For testing in cell culture applications, please filter before use. Note that you may experience some loss of protein during the filtration process.  
**Storage:** Store at -80°C.  
**Stability:** Stable for 12 months from the date of receipt of the product under proper storage and handling conditions. Avoid repeated freeze-thaw cycles.  
**RefSeq:** [NP\\_109587](#)  
**Locus ID:** 5605



[View online »](#)

UniProt ID:	<a href="#">P36507</a>
RefSeq Size:	1759
Cytogenetics:	19p13.3
RefSeq ORF:	1200
Synonyms:	CFC4; MAPKK2; MEK2; MKK2; PRKMK2
Summary:	<p>The protein encoded by this gene is a dual specificity protein kinase that belongs to the MAP kinase kinase family. This kinase is known to play a critical role in mitogen growth factor signal transduction. It phosphorylates and thus activates MAPK1/ERK2 and MAPK2/ERK3. The activation of this kinase itself is dependent on the Ser/Thr phosphorylation by MAP kinase kinase kinases. Mutations in this gene cause cardiofaciocutaneous syndrome (CFC syndrome), a disease characterized by heart defects, cognitive disability, and distinctive facial features similar to those found in Noonan syndrome. The inhibition or degradation of this kinase is also found to be involved in the pathogenesis of Yersinia and anthrax. A pseudogene, which is located on chromosome 7, has been identified for this gene. [provided by RefSeq, Jul 2008]</p>
Protein Families:	Druggable Genome, Protein Kinase
Protein Pathways:	Acute myeloid leukemia, B cell receptor signaling pathway, Bladder cancer, Chronic myeloid leukemia, Endometrial cancer, ErbB signaling pathway, Fc epsilon RI signaling pathway, Gap junction, Glioma, GnRH signaling pathway, Insulin signaling pathway, Long-term depression, Long-term potentiation, MAPK signaling pathway, Melanogenesis, Melanoma, Natural killer cell mediated cytotoxicity, Neurotrophin signaling pathway, Non-small cell lung cancer, Pathways in cancer, Prion diseases, Prostate cancer, Regulation of actin cytoskeleton, Renal cell carcinoma, T cell receptor signaling pathway, Thyroid cancer, Toll-like receptor signaling pathway, Vascular smooth muscle contraction, VEGF signaling pathway

### Product images:



Coomassie blue staining of purified MAP2K2 protein (Cat# TP301827). The protein was produced from HEK293T cells transfected with MAP2K2 cDNA clone (Cat# [RC201827]) using MegaTran 2.0 (Cat# [TT210002]).