

Product datasheet for **TP301809L**

Lamin A (LMNA) (NM_005572) Human Recombinant Protein

Product data:

Product Type: Recombinant Proteins

Description: Recombinant protein of human lamin A/C (LMNA), transcript variant 2, 1 mg

Species: Human

Expression Host: HEK293T

Expression cDNA Clone or AA Sequence: >RC201809 protein sequence

Red=Cloning site **Green**=Tags(s)

METPSQRRATRSGAQASSTPLSPTRITRLQEKEDLQELNDR LAVYIDRVRSLETENAGLRLRITESEEV
SREVSGIKAAYEAELGDARKTLDSVAKERARLQLELSKVREEFKELKARNTKKEGDLIAAARLKDLEAL
LNSKEAALSTALSEKRTLEGELHDLRGQVAKLEAALGEAKKQLQDEMLRRVDAENRLQTMKEELDFQKNI
YSEELRETKRRHETRLVEIDNGKQREFESRLADALQELRAQHEDQVEQYKKELEKTYSAKLDNARQSAER
NSNLVGAAHEELQQSRIRIDSLAQLSQLQKQLAAKEAKLRDLEDSLARERDTSRRLLAEKEREMAEMRA
RMQQQLDEYQELLDIKLALDMEIHAYRKLEEGEEERLRLSPSPTSQRSRGRASSHSSQTQGGGSVTKKRK
LESTESRSSFSQHARTSGRVAVEEVDEEGKFVRLRNKSNEDQSMGNWQIKRQNGDDPLLTYRFPKFTLK
AGQVVTIWAAGAGATHSPPTDLVWKAQNTWGCNSLRTALINSTGEEVAMRKLVRSVTVVEDDEDEDGDD
LLHHHHVSGSRR

TRTRPLEQKLISEEDLAANDILDYKDDDDKV

Tag: C-Myc/DDK

Predicted MW: 65 kDa

Concentration: >0.05 µg/µL as determined by microplate BCA method

Purity: > 80% as determined by SDS-PAGE and Coomassie blue staining

Buffer: 25 mM Tris-HCl, 100 mM glycine, pH 7.3, 10% glycerol

Preparation: Recombinant protein was captured through anti-DDK affinity column followed by conventional chromatography steps.

Note: For testing in cell culture applications, please filter before use. Note that you may experience some loss of protein during the filtration process.

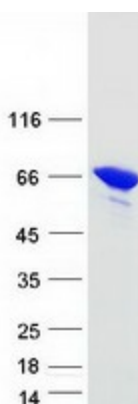
Storage: Store at -80°C.



[View online »](#)

Stability:	Stable for 12 months from the date of receipt of the product under proper storage and handling conditions. Avoid repeated freeze-thaw cycles.
RefSeq:	NP_005563
Locus ID:	4000
UniProt ID:	P02545
RefSeq Size:	2077
Cytogenetics:	1q22
RefSeq ORF:	1716
Synonyms:	CDCD1; CDDC; CMD1A; CMT2B1; EMD2; FPL; FPLD; FPLD2; HGPS; IDC; LDP1; LFP; LGMD1B; LMN1; LMNC; LMNL1; MADA; PRO1
Summary:	The nuclear lamina consists of a two-dimensional matrix of proteins located next to the inner nuclear membrane. The lamin family of proteins make up the matrix and are highly conserved in evolution. During mitosis, the lamina matrix is reversibly disassembled as the lamin proteins are phosphorylated. Lamin proteins are thought to be involved in nuclear stability, chromatin structure and gene expression. Vertebrate lamins consist of two types, A and B. Alternative splicing results in multiple transcript variants. Mutations in this gene lead to several diseases: Emery-Dreifuss muscular dystrophy, familial partial lipodystrophy, limb girdle muscular dystrophy, dilated cardiomyopathy, Charcot-Marie-Tooth disease, and Hutchinson-Gilford progeria syndrome. [provided by RefSeq, Apr 2012]
Protein Families:	Druggable Genome
Protein Pathways:	Arrhythmogenic right ventricular cardiomyopathy (ARVC), Dilated cardiomyopathy, Hypertrophic cardiomyopathy (HCM)

Product images:



Coomassie blue staining of purified LMNA protein (Cat# [TP301809]). The protein was produced from HEK293T cells transfected with LMNA cDNA clone (Cat# [RC201809]) using MegaTran 2.0 (Cat# [TT210002]).