

Product datasheet for **TP301803M**

PGP9.5 (UCHL1) (NM_004181) Human Recombinant Protein

Product data:

Product Type: Recombinant Proteins

Description: Recombinant protein of human ubiquitin carboxyl-terminal esterase L1 (ubiquitin thiolesterase) (UCHL1), 100 µg

Species: Human

Expression Host: HEK293T

Expression cDNA Clone or AA Sequence: >RC201803 protein sequence
Red=Cloning site **Green**=Tags(s)

MQLKPM EINPEMLNKVLSRLGVAGQWRFVDVLGLEEESLGSPAPACALLLFP LTAQHENFRKKQIEEL
KGQEVSPKVYFMKQTIGNSCGTIGLIHAVANNQDKLGFEDGSVLKQFLSETEKMSPEDRAKCFEKNEAIQ
AAHDAVAQEGQCRVDDKVN FHFILFNNVDGHL YELDGRMPFPVNHGASSED TLLKDAAKVCREFTEREQG
EVRFSAVALCKAA

TRTRPLEQKLISEEDLAANDILDYKDDDDKV

Tag: C-Myc/DDK

Predicted MW: 24.6 kDa

Concentration: >0.1 µg/µL as determined by microplate BCA method

Purity: > 80% as determined by SDS-PAGE and Coomassie blue staining

Buffer: 25 mM Tris-HCl, 100 mM glycine, pH 7.3, 10% glycerol

Preparation: Recombinant protein was captured through anti-DDK affinity column followed by conventional chromatography steps.

Note: For testing in cell culture applications, please filter before use. Note that you may experience some loss of protein during the filtration process.

Storage: Store at -80°C.

Stability: Stable for 12 months from the date of receipt of the product under proper storage and handling conditions. Avoid repeated freeze-thaw cycles.

RefSeq: [NP_004172](#)

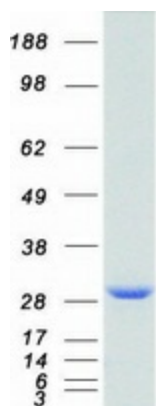
Locus ID: 7345



[View online »](#)

UniProt ID:	P09936 , V9HW74
RefSeq Size:	1141
Cytogenetics:	4p13
RefSeq ORF:	669
Synonyms:	HEL-117; HEL-S-53; NDGOA; PARK5; PGP 9.5; PGP9.5; PGP95; SPG79; Uch-L1
Summary:	The protein encoded by this gene belongs to the peptidase C12 family. This enzyme is a thiol protease that hydrolyzes a peptide bond at the C-terminal glycine of ubiquitin. This gene is specifically expressed in the neurons and in cells of the diffuse neuroendocrine system. Mutations in this gene may be associated with Parkinson disease.[provided by RefSeq, Sep 2009]
Protein Families:	Druggable Genome, Protease
Protein Pathways:	Parkinson's disease

Product images:



Coomassie blue staining of purified UCHL1 protein (Cat# [TP301803]). The protein was produced from HEK293T cells transfected with UCHL1 cDNA clone (Cat# [RC201803]) using MegaTran 2.0 (Cat# [TT210002]).