

Product datasheet for **TP301803**

PGP9.5 (UCHL1) (NM_004181) Human Recombinant Protein

Product data:

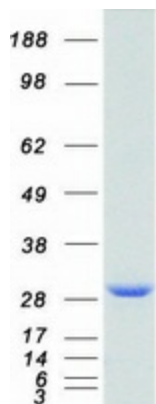
Product Type:	Recombinant Proteins
Description:	Recombinant protein of human ubiquitin carboxyl-terminal esterase L1 (ubiquitin thiolesterase) (UCHL1)
Species:	Human
Expression Host:	HEK293T
Tag:	C-Myc/DDK
Predicted MW:	24.6 kDa
Concentration:	>50 ug/mL as determined by microplate BCA method
Purity:	> 80% as determined by SDS-PAGE and Coomassie blue staining
Buffer:	25 mM Tris.HCl, pH 7.3, 100 mM glycine, 10% glycerol
Preparation:	Recombinant protein was captured through anti-DDK affinity column followed by conventional chromatography steps.
Storage:	Store at -80°C.
Stability:	Stable for 12 months from the date of receipt of the product under proper storage and handling conditions. Avoid repeated freeze-thaw cycles.
RefSeq:	<u>NP_004172</u>
Locus ID:	7345
RefSeq Size:	1141
Cytogenetics:	4p13
RefSeq ORF:	669
Synonyms:	HEL-117; HEL-S-53; NDGOA; PARK5; PGP 9.5; PGP9.5; PGP95; SPG79; Uch-L1
Summary:	The protein encoded by this gene belongs to the peptidase C12 family. This enzyme is a thiol protease that hydrolyzes a peptide bond at the C-terminal glycine of ubiquitin. This gene is specifically expressed in the neurons and in cells of the diffuse neuroendocrine system. Mutations in this gene may be associated with Parkinson disease. [provided by RefSeq, Sep 2009]
Protein Families:	Druggable Genome, Protease



[View online »](#)

Protein Pathways: Parkinson's disease

Product images:



Coomassie blue staining of purified UCHL1 protein (Cat# TP301803). The protein was produced from HEK293T cells transfected with UCHL1 cDNA clone (Cat# [RC201803]) using MegaTran 2.0 (Cat# [TT210002]).