

## Product datasheet for **TP301800L**

### HSP27 (HSPB1) (NM\_001540) Human Recombinant Protein

#### Product data:

Product Type:	Recombinant Proteins
Description:	Recombinant protein of human heat shock 27kDa protein 1 (HSPB1), 1 mg
Species:	Human
Expression Host:	HEK293T
Expression cDNA Clone or AA Sequence:	>RC201800 protein sequence <b>Red</b> =Cloning site <b>Green</b> =Tags(s)
	 MTERRVPFSLLRGPSWDPFRDWYPHSRLFDQAFGLPRLPEEWSQWLGGSSWPGYVRPLPPAAIESPAVAA PAYSRALSRQLSSGVSEIRHTADRWRVSLDVNHFAPDELTVKTKDGVWEITGKHEERQDEHGYISRCFTR KYTLPPGVDPTQVSSSLSPGTLTVEAPMPKLATQSNEITIPVTFESRAQLGGPEAAKSDETAAK  <b>TRTRPLEQKLISEEDLAANDILDYKDDDDKV</b>
Tag:	C-Myc/DDK
Predicted MW:	22.6 kDa
Concentration:	>0.05 µg/µL as determined by microplate BCA method
Purity:	> 80% as determined by SDS-PAGE and Coomassie blue staining
Buffer:	25 mM Tris-HCl, 100 mM glycine, pH 7.3, 10% glycerol
Preparation:	Recombinant protein was captured through anti-DDK affinity column followed by conventional chromatography steps.
Note:	For testing in cell culture applications, please filter before use. Note that you may experience some loss of protein during the filtration process.
Storage:	Store at -80°C.
Stability:	Stable for 12 months from the date of receipt of the product under proper storage and handling conditions. Avoid repeated freeze-thaw cycles.
RefSeq:	<a href="#">NP_001531</a>
Locus ID:	3315
UniProt ID:	<a href="#">P04792</a> , <a href="#">V9HW43</a>
RefSeq Size:	914



[View online »](#)

Cytogenetics: 7q11.23

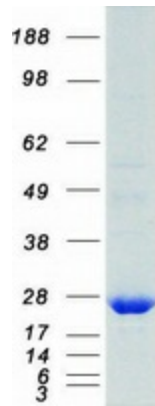
RefSeq ORF: 615

Synonyms: CMT2F; HEL-S-102; HMN2B; HS.76067; Hsp25; HSP27; HSP28; SRP27

**Summary:** This gene encodes a member of the small heat shock protein (HSP20) family of proteins. In response to environmental stress, the encoded protein translocates from the cytoplasm to the nucleus and functions as a molecular chaperone that promotes the correct folding of other proteins. This protein plays an important role in the differentiation of a wide variety of cell types. Expression of this gene is correlated with poor clinical outcome in multiple human cancers, and the encoded protein may promote cancer cell proliferation and metastasis, while protecting cancer cells from apoptosis. Mutations in this gene have been identified in human patients with Charcot-Marie-Tooth disease and distal hereditary motor neuropathy. [provided by RefSeq, Aug 2017]

**Protein Pathways:** MAPK signaling pathway, VEGF signaling pathway

### Product images:



Coomassie blue staining of purified HSPB1 protein (Cat# [TP301800]). The protein was produced from HEK293T cells transfected with HSPB1 cDNA clone (Cat# [RC201800]) using MegaTran 2.0 (Cat# [TT210002]).