

Product datasheet for TP301798M

Proteasome beta 1 (PSMB1) (NM_002793) Human Recombinant Protein

Product data:

Product Type:	Recombinant Proteins
Description:	Recombinant protein of human proteasome (prosome, macropain) subunit, beta type, 1 (PSMB1), 100 µg
Species:	Human
Expression Host:	HEK293T
Expression cDNA Clone or AA Sequence:	>RC201798 protein sequence Red=Cloning site Green=Tags(s)
	<p>MLSSTAMYSAAGRDLGMEPHRAAGPLQLRFSPYVFNGGTILAIAGEDFAIVASDTRLSEGFSIHDRDSPK CYKLTDKTVIGCSGFHGDCLTLTKIIEARLKMYSNNKAMTTGAIAMLSTILYSRRFFPYVYNIIGG LDEEGKGAVYSFDPVGSYQRDSFKAGGSASAMLQPLLDNQVGFKNMQNVEHVPLSLDRAMRLVKDVFISA AERDVYTGDALRICIVTKEGIREETVSLRKD</p> <p>TRTRPLEQKLISEEDLAANDILDYKDDDDKV</p>
Tag:	C-Myc/DDK
Predicted MW:	26.3 kDa
Concentration:	>0.05 µg/µL as determined by microplate BCA method
Purity:	> 80% as determined by SDS-PAGE and Coomassie blue staining
Buffer:	25 mM Tris-HCl, 100 mM glycine, pH 7.3, 10% glycerol
Preparation:	Recombinant protein was captured through anti-DDK affinity column followed by conventional chromatography steps.
Note:	For testing in cell culture applications, please filter before use. Note that you may experience some loss of protein during the filtration process.
Storage:	Store at -80°C.
Stability:	Stable for 12 months from the date of receipt of the product under proper storage and handling conditions. Avoid repeated freeze-thaw cycles.
RefSeq:	<u>NP_002784</u>
Locus ID:	5689



[View online »](#)

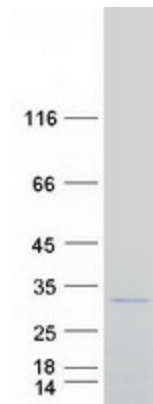
UniProt ID: [P20618](#), [A0A140VK45](#)
RefSeq Size: 938
Cytogenetics: 6q27
RefSeq ORF: 723
Synonyms: HC5; PMSB1; PSC5

Summary: The proteasome is a multicatalytic proteinase complex with a highly ordered ring-shaped 20S core structure. The core structure is composed of 4 rings of 28 non-identical subunits; 2 rings are composed of 7 alpha subunits and 2 rings are composed of 7 beta subunits. Proteasomes are distributed throughout eukaryotic cells at a high concentration and cleave peptides in an ATP/ubiquitin-dependent process in a non-lysosomal pathway. An essential function of a modified proteasome, the immunoproteasome, is the processing of class I MHC peptides. This gene encodes a member of the proteasome B-type family, also known as the T1B family, that is a 20S core beta subunit. This gene is tightly linked to the TBP (TATA-binding protein) gene in human and in mouse, and is transcribed in the opposite orientation in both species. [provided by RefSeq, Jul 2008]

Protein Families: Protease

Protein Pathways: Proteasome

Product images:



Coomassie blue staining of purified PSMB1 protein (Cat# [TP301798]). The protein was produced from HEK293T cells transfected with PSMB1 cDNA clone (Cat# [RC201798]) using MegaTran 2.0 (Cat# [TT210002]).