

## Product datasheet for **TP301798L**

### Proteasome beta 1 (PSMB1) (NM\_002793) Human Recombinant Protein

#### Product data:

**Product Type:** Recombinant Proteins

**Description:** Recombinant protein of human proteasome (prosome, macropain) subunit, beta type, 1 (PSMB1), 1 mg

**Species:** Human

**Expression Host:** HEK293T

**Expression cDNA Clone or AA Sequence:** >RC201798 protein sequence  
**Red**=Cloning site **Green**=Tags(s)

MLSSTAMYSAAGRDLGMEPHRAAGPLQLRFSPYVFNGGTILAIAGEDFAIVASDTRLSEGFSIHDRDSPK  
CYKLTDKTVIGCSGFHGDCLTLTKIIEARLKMYSNNKAMTTGAIAMLSTILYSRRFFPYVYNIIGG  
LDEEGKGAVYSFDPVGSYQRDSFKAGGSASAMLQPLLDNQVGFKNMQNVEHVPLSLDRAMRLVKDVFISA  
AERDVYTGDALRICIVTKEGIREETVSLRKD

**TRTRPLEQKLISEEDLAANDILDYKDDDDKV**

**Tag:** C-Myc/DDK

**Predicted MW:** 26.3 kDa

**Concentration:** >0.05 µg/µL as determined by microplate BCA method

**Purity:** > 80% as determined by SDS-PAGE and Coomassie blue staining

**Buffer:** 25 mM Tris-HCl, 100 mM glycine, pH 7.3, 10% glycerol

**Preparation:** Recombinant protein was captured through anti-DDK affinity column followed by conventional chromatography steps.

**Note:** For testing in cell culture applications, please filter before use. Note that you may experience some loss of protein during the filtration process.

**Storage:** Store at -80°C.

**Stability:** Stable for 12 months from the date of receipt of the product under proper storage and handling conditions. Avoid repeated freeze-thaw cycles.

**RefSeq:** [NP\\_002784](#)

**Locus ID:** 5689



[View online »](#)

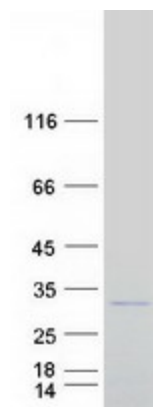
UniProt ID: [P20618](#), [A0A140VK45](#)  
RefSeq Size: 938  
Cytogenetics: 6q27  
RefSeq ORF: 723  
Synonyms: HC5; PMSB1; PSC5

**Summary:** The proteasome is a multicatalytic proteinase complex with a highly ordered ring-shaped 20S core structure. The core structure is composed of 4 rings of 28 non-identical subunits; 2 rings are composed of 7 alpha subunits and 2 rings are composed of 7 beta subunits. Proteasomes are distributed throughout eukaryotic cells at a high concentration and cleave peptides in an ATP/ubiquitin-dependent process in a non-lysosomal pathway. An essential function of a modified proteasome, the immunoproteasome, is the processing of class I MHC peptides. This gene encodes a member of the proteasome B-type family, also known as the T1B family, that is a 20S core beta subunit. This gene is tightly linked to the TBP (TATA-binding protein) gene in human and in mouse, and is transcribed in the opposite orientation in both species. [provided by RefSeq, Jul 2008]

**Protein Families:** Protease

**Protein Pathways:** Proteasome

### Product images:



Coomassie blue staining of purified PSMB1 protein (Cat# [TP301798]). The protein was produced from HEK293T cells transfected with PSMB1 cDNA clone (Cat# [RC201798]) using MegaTran 2.0 (Cat# [TT210002]).