

Product datasheet for **TP301795M**

PLK1 (NM_005030) Human Recombinant Protein

Product data:

Product Type:	Recombinant Proteins
Description:	Recombinant protein of human polo-like kinase 1 (Drosophila) (PLK1), 100 µg
Species:	Human
Expression Host:	HEK293T
Expression cDNA Clone or AA Sequence:	>RC201795 representing NM_005030 Red =Cloning site Green =Tags(s)

MSAAVTAGKLARAPADPGKAGVPGVAAPGAPAAAPPAKEIPEVLVDPRSRRRYVRGRFLGKGGFAKCFEI
SDADTKEVFAGKIVPKSLLLKPHQREKMSMEISIHRS LAHQHVGFHGGFFEDNDFVFWLELCRRRSLLE
LHKRRKALTEPEARYYLRQIVLGCQYLHRNRVIHRDLKGNLFLNEDLEVKIGDFGLATKVEYDGERKKT
LCGTPNYIAPEVLSKKGHSFEVDVWSIGCIMYTLVVGKPPFETSCLKETYLRIKKNEYSIPKHINPVAAS
LIQKMLQTDPTARPTINELLNDEFFTSGYIPARLPITCLTIPPRFSIAPSSLDPSNRKPLTVLNKGLNRP
LPERPREKEEPVRETGEVVDCHLS DMLQQLHSVNASKPSEGLVRQEEAEDPACIPIFWVSKWVDYSDK
YGLGYQLCDNSVGVLFNDSTRILILYNDGDSLQYIERDGTESYLTVSSHNSLMKKITLLKYFRNYMSEHL
LKAGANITPREGDELARLPYLRTWFRTRSAILHLSNGSVQINFFQDHTKLILCLPMAAVTYIDEKRDFR
TYRLSLLEEGCCKELASRLRYARTMVDKLLSSRSASNRLKAS

TRTRPLEQKLISEEDLAANDILDYKDDDDKV

Tag:	C-Myc/DDK
Predicted MW:	68.1 kDa
Concentration:	>0.05 µg/µL as determined by microplate BCA method
Purity:	> 80% as determined by SDS-PAGE and Coomassie blue staining
Buffer:	25 mM Tris-HCl, 100 mM glycine, pH 7.3, 10% glycerol
Bioactivity:	In vitro kinase assay substrate (ELISA) (PMID: 28024153)
Preparation:	Recombinant protein was captured through anti-DDK affinity column followed by conventional chromatography steps.
Note:	For testing in cell culture applications, please filter before use. Note that you may experience some loss of protein during the filtration process.
Storage:	Store at -80°C.



[View online »](#)

Stability: Stable for 12 months from the date of receipt of the product under proper storage and handling conditions. Avoid repeated freeze-thaw cycles.

RefSeq: [NP_005021](#)

Locus ID: 5347

UniProt ID: [P53350](#)

RefSeq Size: 2204

Cytogenetics: 16p12.2

RefSeq ORF: 1809

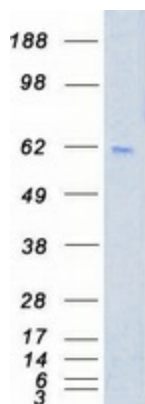
Synonyms: PLK; STPK13

Summary: The Ser/Thr protein kinase encoded by this gene belongs to the CDC5/Polo subfamily. It is highly expressed during mitosis and elevated levels are found in many different types of cancer. Depletion of this protein in cancer cells dramatically inhibited cell proliferation and induced apoptosis; hence, it is a target for cancer therapy. [provided by RefSeq, Sep 2015]

Protein Families: Druggable Genome, Protein Kinase

Protein Pathways: Cell cycle, Oocyte meiosis, Progesterone-mediated oocyte maturation

Product images:



Coomassie blue staining of purified PLK1 protein (Cat# [TP301795]). The protein was produced from HEK293T cells transfected with PLK1 cDNA clone (Cat# [RC201795]) using MegaTran 2.0 (Cat# [TT210002]).