

## Product datasheet for **TP301795L**

### **PLK1 (NM\_005030) Human Recombinant Protein**

#### **Product data:**

<b>Product Type:</b>	Recombinant Proteins
<b>Description:</b>	Recombinant protein of human polo-like kinase 1 (Drosophila) (PLK1), 1 mg
<b>Species:</b>	Human
<b>Expression Host:</b>	HEK293T
<b>Expression cDNA Clone or AA Sequence:</b>	>RC201795 representing NM_005030 <b>Red</b> =Cloning site <b>Green</b> =Tags(s)

MSAAVTAGKLARAPADPGKAGVPGVAAPGAPAAAPPAKEIPEVLVDPRSRRRYVRGRFLGKGGFAKCFEI  
SDADTKEVFAGKIVPKSLLLKPHQREKMSMEISIHRS LAHQHVVGFGHGFEDNDFVFWLELCRRRSLE  
LHKRRKALTEPEARYYLQRQIVLGCQYLHRNRVIHRDLKGNLFLNEDLEVKIGDFGLATKVEYDGERKKT  
LCGTPNYIAPEVLSKKGHSFEVDVWSIGCIMYTLVVGKPPFETSCLKETYLRKIKNEYSIPKHINPVAAS  
LIQKMLQTDPTARPTINELLNDEFFTSGYIPARLPITCLTIPPRFSIAPSSLDPSNRKPLTVLNKGLNRP  
LPERPREKEEPVVRETGEVVDCHLSDMLQQLHSVNASKPSEGLVRQEEAEDPACIPIFWVSKWVDYSDK  
YGLGYQLCDNSVGVLFNDSTRILYNDGDSLQYIERDGTESYLTVSSHNSLMKKITLLKYFRNYMSEHL  
LKAGANITPREGDELARLPYLRTWFRTRSAILHLSNGSVQINFFQDHTKLILCLPMAAVTYIDEKRDFR  
TYRLSLLEEYGCKELASRLRYARTMVDKLLSSRSASNRLKAS

**TRTRPLEQKLISEEDLAANDILDYKDDDDKV**

<b>Tag:</b>	C-Myc/DDK
<b>Predicted MW:</b>	68.1 kDa
<b>Concentration:</b>	>0.05 µg/µL as determined by microplate BCA method
<b>Purity:</b>	> 80% as determined by SDS-PAGE and Coomassie blue staining
<b>Buffer:</b>	25 mM Tris-HCl, 100 mM glycine, pH 7.3, 10% glycerol
<b>Bioactivity:</b>	In vitro kinase assay substrate (ELISA) (PMID: <a href="#">28024153</a> )
<b>Preparation:</b>	Recombinant protein was captured through anti-DDK affinity column followed by conventional chromatography steps.
<b>Note:</b>	For testing in cell culture applications, please filter before use. Note that you may experience some loss of protein during the filtration process.
<b>Storage:</b>	Store at -80°C.



[View online »](#)

**Stability:** Stable for 12 months from the date of receipt of the product under proper storage and handling conditions. Avoid repeated freeze-thaw cycles.

**RefSeq:** [NP\\_005021](#)

**Locus ID:** 5347

**UniProt ID:** [P53350](#)

**RefSeq Size:** 2204

**Cytogenetics:** 16p12.2

**RefSeq ORF:** 1809

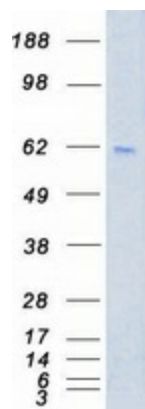
**Synonyms:** PLK; STPK13

**Summary:** The Ser/Thr protein kinase encoded by this gene belongs to the CDC5/Polo subfamily. It is highly expressed during mitosis and elevated levels are found in many different types of cancer. Depletion of this protein in cancer cells dramatically inhibited cell proliferation and induced apoptosis; hence, it is a target for cancer therapy. [provided by RefSeq, Sep 2015]

**Protein Families:** Druggable Genome, Protein Kinase

**Protein Pathways:** Cell cycle, Oocyte meiosis, Progesterone-mediated oocyte maturation

### Product images:



Coomassie blue staining of purified PLK1 protein (Cat# [TP301795]). The protein was produced from HEK293T cells transfected with PLK1 cDNA clone (Cat# [RC201795]) using MegaTran 2.0 (Cat# [TT210002]).