

Product datasheet for TP301791M

TWF2 (NM_007284) Human Recombinant Protein

Product data:

Product Type:	Recombinant Proteins
Description:	Recombinant protein of human twinfilin, actin-binding protein, homolog 2 (Drosophila) (TWF2), 100 µg
Species:	Human
Expression Host:	HEK293T
Expression cDNA Clone or AA Sequence:	>RC201791 protein sequence Red=Cloning site Green=Tags(s)

MAHQGTGIHATEELKEFFAKARAGSVRLIKVIEDEQLVLGASQEPVGRWDQDYDRAVLPLLLDAQQPCYLL
YRLDSQNAQGFEWLFLAWSPDNSPVRLKMLYAATRATVKKEFGGGHIKDELFGTVKDDLSFAGYQKHLSS
CAAPAPL TSAERELQQIRINEVKTEISVESKHQTLQGLAFPLQPEAQRALQQLKQKMVNYIQMKDLERE
TIELVHTEPTDVAQLPSRVPRDAARYHFFLYKHTHEGDPLESVFIYSMPGYKCSIKERMILYSSCKSRLL
DSVEQDFHLEIAKKIEIGDGAELTAEFLYDEVHPKQHAFKQAFKPKGPGGKRGHKRLIRGPGENGDDS

TRTRPLEQKLISEEDLAANDILDYKDDDDKV

Tag:	C-Myc/DDK
Predicted MW:	39.4 kDa
Concentration:	>0.05 µg/µL as determined by microplate BCA method
Purity:	> 80% as determined by SDS-PAGE and Coomassie blue staining
Buffer:	25 mM Tris-HCl, 100 mM glycine, pH 7.3, 10% glycerol
Preparation:	Recombinant protein was captured through anti-DDK affinity column followed by conventional chromatography steps.
Note:	For testing in cell culture applications, please filter before use. Note that you may experience some loss of protein during the filtration process.
Storage:	Store at -80°C.
Stability:	Stable for 12 months from the date of receipt of the product under proper storage and handling conditions. Avoid repeated freeze-thaw cycles.
RefSeq:	NP_009215
Locus ID:	11344



[View online »](#)

UniProt ID: [Q6IBS0](#)

RefSeq Size: 1659

Cytogenetics: 3p21.2

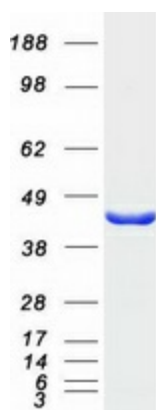
RefSeq ORF: 1047

Synonyms: A6r; A6RP; MSTP011; PTK9L

Summary: The protein encoded by this gene was identified by its interaction with the catalytic domain of protein kinase C-zeta. The encoded protein contains an actin-binding site and an ATP-binding site. It is most closely related to twinfilin (PTK9), a conserved actin monomer-binding protein. [provided by RefSeq, Jul 2008]

Protein Families: Druggable Genome

Product images:



Coomassie blue staining of purified TWF2 protein (Cat# [TP301791]). The protein was produced from HEK293T cells transfected with TWF2 cDNA clone (Cat# [RC201791]) using MegaTran 2.0 (Cat# [TT210002]).