

Product datasheet for **TP301789M**

COPB2 (NM_004766) Human Recombinant Protein

Product data:

Product Type:	Recombinant Proteins
Description:	Recombinant protein of human coatomer protein complex, subunit beta 2 (beta prime) (COPB2), transcript variant 1, 100 µg
Species:	Human
Expression Host:	HEK293T
Expression cDNA Clone or AA Sequence:	>RC201789 protein sequence Red =Cloning site Green =Tags(s)

MPLRLDIKRKLTARSDRVKSVDLHPTPEWMLASLYNGSVCVWNHETQTLVKTFEVCCLPVRAAKFVARKN
WVVTGADDMQIRVFNNTLERVHMFEAHSDYIRCIHVHPTQPFILTSDDMLIKLWDWDKKWSCSQVFEG
HTHYVMQIVINPKDNNQFASASLDRTIKVWQLGSSSPNFTLEGHEKGVNCIDYYSGGDKPYLISGADDRL
VKIWDYQNKTCVQTLEGHAQNVSCASFHPELPIIITGSEDGTVRIWHSSTYRLESTLNYGMERVWCVASL
RGSNNVALGYDEGSIIVKLGREEPAMSMANGKIIWAKHSEVQQANLTKAMGDAEIKDGERLPLAVKDMGS
CEIYPQTIQHNPNGRFVVCVCGDGEYIYTAMALRNKSFSGAQEFWAHDSSEYAIRESNSIVKIFKNFKE
KKSFKPDFGAESYGGFLLGVRVNLGAFYDWDNTELIRRIEIQPKHIFWSDSGELVCIATEESFFILKY
LSEKVLAAQETHEGVTEGIEDAFEVLGEIQEIVKTGLWVGDCFIYTSSVNRLNYYVGGVEIVTIAHLDR
MYLLGYIPKDNRLYLGDKELNIISYLLVSVLEYQTAVMRRDFSMADKVLPTIPKEQRTRVAHFLEKQGF
KQQUALTVSTDPEHRFELALQLGELKIAYQLAVEAESEQKWKQLAELAISKQFGLAQECLHHAQDYGGLL
LLATASGNANMVNKLAEGERDGNVAFMSYFLQKVDACLELLIRTGRLPEAAFLARTYLPQSQRV
KLWRENLSKVNQAAESLADPTEYENLFPGLKEAFVVEEWWKETHADLWPAKQYPLVTPNEERNVMEEGK
DFQPSRSTAQQELDGKPASPTPVIVASHTANKEEKSLLELEVLDLNLELEDIDTTDINLDEDILDD

TRTRPLEQKLISEEDLAANDILDYKDDDDKV

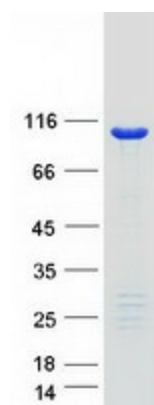
Tag:	C-Myc/DDK
Predicted MW:	102.3 kDa
Concentration:	>0.05 µg/µL as determined by microplate BCA method
Purity:	> 80% as determined by SDS-PAGE and Coomassie blue staining
Buffer:	25 mM Tris-HCl, 100 mM glycine, pH 7.3, 10% glycerol
Preparation:	Recombinant protein was captured through anti-DDK affinity column followed by conventional chromatography steps.



[View online >](#)

Note:	For testing in cell culture applications, please filter before use. Note that you may experience some loss of protein during the filtration process.
Storage:	Store at -80°C.
Stability:	Stable for 12 months from the date of receipt of the product under proper storage and handling conditions. Avoid repeated freeze-thaw cycles.
RefSeq:	NP_004757
Locus ID:	9276
UniProt ID:	P35606
RefSeq Size:	3142
Cytogenetics:	3q23
RefSeq ORF:	2718
Synonyms:	beta'-COP; MCPH19
Summary:	The Golgi coatomer complex (see MIM 601924) constitutes the coat of nonclathrin-coated vesicles and is essential for Golgi budding and vesicular trafficking. It consists of 7 protein subunits, including COPB2.[supplied by OMIM, Jul 2002]
Protein Families:	Druggable Genome

Product images:



Coomassie blue staining of purified COPB2 protein (Cat# [TP301789]). The protein was produced from HEK293T cells transfected with COPB2 cDNA clone (Cat# [RC201789]) using MegaTran 2.0 (Cat# [TT210002]).