

Product datasheet for TP301786SE

Nucleobindin 1 (NUCB1) (NM_006184) Human Recombinant Protein

Product data:

Product Type:	Recombinant Proteins
Description:	Purified recombinant protein of Human nucleobindin 1 (NUCB1), secretory expressed in HEK293T cells, 20ug
Species:	Human
Expression Host:	HEK293T
Expression cDNA Clone or AA Sequence:	>RC201786 protein sequence Red =Cloning site Green =Tags(s)
	MPPSGPRGTLTLLPLLLLLLRAVLAVPLERGA PNKEETPATESPDTGLYYHRYLQEVIDVLETDG HFREKLQAANAEDIKSGKLSRELDVSHHVRTK LDELKRQEVSRRLRMLLKAKMDAEQDPNVQ VDHLNLLKQFEHLDPQNTHTFEARDLELLIQT ATRDLAQYDAAHHEEFKRYEMLKEHERRR YLESLGEEQRKEAERKLEEQQRRRHREHP KVNVPGSQAQLKEVWEELDGLDPNRFNPK TFFILHDINSDGVLDEQEALFTKELEKVD PKNEEDDMREMEERLRMREHVMKNVDN QDRLVTLEEFLLASTQRKEFGDTGEGWET VEMHPAYTEELRRFEEELAAREALNAKA QRLSQETEALGRSQGRLEAQKRELQQA VLHMEQRKQQQQQQGQGHKAPAAHPEG QLKFHPDTDVVPAPAGDQKEVDTSEKLL LRLPEVEVPQHL
	TRTRPLEQKLISEEDLAANDILDYKDDDDKV
Tag:	C-Myc/DDK
Predicted MW:	54.7 kDa
Concentration:	>50 ug/mL as determined by microplate Bradford method
Purity:	> 80% as determined by SDS-PAGE and Coomassie blue staining
Buffer:	25mM Tris-HCl, pH7.3, 100mM glycine, 10% glycerol
Note:	For culture applications, please filter before use. Note that you may experience some loss of protein during the filtration process.
Storage:	Store at -80°C after receiving vials.
Stability:	Stable for at least 1 year from receipt of products under proper storage and handling conditions. Avoid repeated freeze-thaw cycles.
RefSeq:	<u>NP_006175</u>
Locus ID:	4924



[View online »](#)

UniProt ID: [Q02818](#), [A8K7Q1](#)

RefSeq Size: 2585

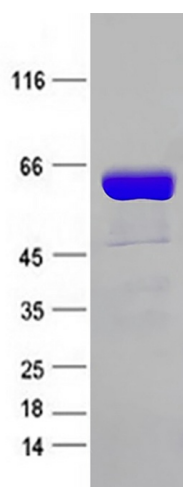
Cytogenetics: 19q13.33

RefSeq ORF: 1383

Synonyms: CALNUC; NUC

Summary: This gene encodes a member of a small calcium-binding EF-hand protein family. The encoded protein is thought to have a key role in Golgi calcium homeostasis and Ca(2+)-regulated signal transduction events. [provided by RefSeq, Jun 2010]

Product images:



Coomassie blue staining of purified NUCB1 protein (Cat #TP301786SE). The protein was produced from mammalian cells transfected with NUCB1 cDNA clone (Cat #[RC201786]).