

Product datasheet for TP301786M

Nucleobindin 1 (NUCB1) (NM_006184) Human Recombinant Protein

Product data:

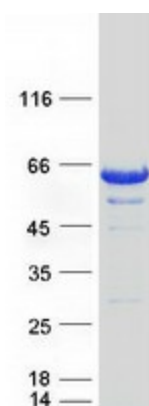
Product Type:	Recombinant Proteins
Description:	Recombinant protein of human nucleobindin 1 (NUCB1), 100 µg
Species:	Human
Expression Host:	HEK293T
Expression cDNA Clone or AA Sequence:	>RC201786 protein sequence Red =Cloning site Green =Tags(s)
	MPPSGPRGTLPLLLLLLRAVLAVPLERGA NKEETPATESPDTGLYYHRYLQEV IDVLETDGHFREKLQAANAEDIKSG KLSRELDVSHHVRTKLDLKRQEV SRLRMLLKAKMDAEQDPNVQVDH LNLLKQFEHLDPQNHTEARDLELLI QTATRDLAQYDAAHHEEFKRYE MLKEHRRRYLES LGEEQRKEA ERKLEEQQRRHREHPKVNVP GSQAQLKEVWEELDGLDPNRF NPKTFFILHDINSDGVLDEQE LEALFTKELEKVDPKNEEDM REMEERLRMREHVMKNVDTN QDRLVTLEEFLLASTQRKEFG DGTGEGWETVEMHPAYTEEL RRFEEELAAREAELNAKAQ RLSQETEALGRSQGRLEAQK RELQAVLHMEQRKQQQQQ GQGHKAPAAHPEGQL KFHPD TDDVVPAPAGDQ KEVD TSEKLLERLPEVE VPQHL
	TRTRPLEQKLISEEDLAANDIL DYKDDDDKV
Tag:	C-Myc/DDK
Predicted MW:	53.7 kDa
Concentration:	>0.05 µg/µL as determined by microplate BCA method
Purity:	> 80% as determined by SDS-PAGE and Coomassie blue staining
Buffer:	25 mM Tris-HCl, 100 mM glycine, pH 7.3, 10% glycerol
Preparation:	Recombinant protein was captured through anti-DDK affinity column followed by conventional chromatography steps.
Note:	For testing in cell culture applications, please filter before use. Note that you may experience some loss of protein during the filtration process.
Storage:	Store at -80°C.
Stability:	Stable for 12 months from the date of receipt of the product under proper storage and handling conditions. Avoid repeated freeze-thaw cycles.
RefSeq:	<u>NP_006175</u>



[View online »](#)

Locus ID:	4924
UniProt ID:	Q02818 , A8K7Q1
RefSeq Size:	2585
Cytogenetics:	19q13.33
RefSeq ORF:	1383
Synonyms:	CALNUC; NUC
Summary:	This gene encodes a member of a small calcium-binding EF-hand protein family. The encoded protein is thought to have a key role in Golgi calcium homeostasis and Ca(2+)-regulated signal transduction events. [provided by RefSeq, Jun 2010]

Product images:



Coomassie blue staining of purified NUCB1 protein (Cat# [TP301786]). The protein was produced from HEK293T cells transfected with NUCB1 cDNA clone (Cat# [RC201786]) using MegaTran 2.0 (Cat# [TT210002]).