

## Product datasheet for **TP301786L**

### Nucleobindin 1 (NUCB1) (NM\_006184) Human Recombinant Protein

#### Product data:

**Product Type:** Recombinant Proteins

**Description:** Recombinant protein of human nucleobindin 1 (NUCB1), 1 mg

**Species:** Human

**Expression Host:** HEK293T

**Expression cDNA** >RC201786 protein sequence

**Clone or AA** **Red**=Cloning site **Green**=Tags(s)

**Sequence:**

MPPSGPRGTLPLLLLLLRAVLAVPLERGA  
PNKEETPATESPDTGLYYHRYLQEVIDV  
LETDGHFRE  
KLQANAEDIKSGKLSRELDVSHHVRTKL  
DELKRQEVSRRLRMLLKAKMDAEQDPN  
VQVDHLNLLKQFEH  
LDPQNHQHTFEARDLELLIQTATRDLAQ  
YDAAHHEEFKRYEMLKEHRRRYLESLG  
EEQRKEAERKLEEQQ  
RRHREHPKVNVPGSQAQLKEVWEELDGL  
DPNRFNPKTFFILHDINSDGVLDEQEAL  
FTKELEKVPDPK  
NEEDDMREMEERLRMREHVMKNVDTNQ  
DRLVTLEEFLLASTQRKEFGDTGEGWET  
VEMHPAYTEELRRF  
EEELAAREAELNAKAQRLSQETEALGRS  
QGRLEAQKRELQAVLHMEQRKQQQQQ  
GQGHKAPAAHPEGQL  
KFHPDTDVVPAPAGDQKEVDTSEKLLER  
LPEVEVPQHL

**TRTRPLEQKLISEEDLAANDILDYKDDDDKV**

**Tag:** C-Myc/DDK

**Predicted MW:** 53.7 kDa

**Concentration:** >0.05 µg/µL as determined by microplate BCA method

**Purity:** > 80% as determined by SDS-PAGE and Coomassie blue staining

**Buffer:** 25 mM Tris-HCl, 100 mM glycine, pH 7.3, 10% glycerol

**Preparation:** Recombinant protein was captured through anti-DDK affinity column followed by conventional chromatography steps.

**Note:** For testing in cell culture applications, please filter before use. Note that you may experience some loss of protein during the filtration process.

**Storage:** Store at -80°C.

**Stability:** Stable for 12 months from the date of receipt of the product under proper storage and handling conditions. Avoid repeated freeze-thaw cycles.

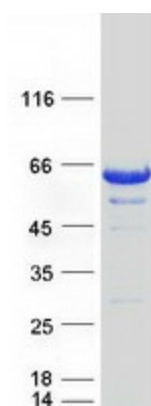
**RefSeq:** [NP\\_006175](#)



[View online »](#)

Locus ID:	4924
UniProt ID:	<a href="#">Q02818</a> , <a href="#">A8K7Q1</a>
RefSeq Size:	2585
Cytogenetics:	19q13.33
RefSeq ORF:	1383
Synonyms:	CALNUC; NUC
Summary:	This gene encodes a member of a small calcium-binding EF-hand protein family. The encoded protein is thought to have a key role in Golgi calcium homeostasis and Ca(2+)-regulated signal transduction events. [provided by RefSeq, Jun 2010]

### Product images:



Coomassie blue staining of purified NUCB1 protein (Cat# [TP301786]). The protein was produced from HEK293T cells transfected with NUCB1 cDNA clone (Cat# [RC201786]) using MegaTran 2.0 (Cat# [TT210002]).