

Product datasheet for **TP301776M**

RAB7 (RAB7A) (NM_004637) Human Recombinant Protein

Product data:

Product Type: Recombinant Proteins

Description: Recombinant protein of human RAB7A, member RAS oncogene family (RAB7A), 100 µg

Species: Human

Expression Host: HEK293T

**Expression cDNA Clone
or AA Sequence:** >RC201776 protein sequence
Red=Cloning site **Green**=Tags(s)

MTSRKKVLLKVIILGDSGVGKTSLMNQYVNNKFSNQYKATIGADFLTKEVMVDDRLVMTMQIWDTAGQERF
QSLGVAFYRGADCCVLVFDVTAPNTFKTLDSWRDEFLIQASPRDPENFPFVVLGNKIDLENRQVATKRAQ
AWCYSKNNIPYFETSAKEAINVEQAFQTIARNALKQETEVELYNEFPEPIKLDKNDRAKASAESCSC

TRTRPLEQKLISEEDLAANDILDYKDDDDKV

Tag: C-Myc/DDK

Predicted MW: 23.3 kDa

Concentration: >0.05 µg/µL as determined by microplate BCA method

Purity: > 80% as determined by SDS-PAGE and Coomassie blue staining

Buffer: 25 mM Tris-HCl, 100 mM glycine, pH 7.3, 10% glycerol

Preparation: Recombinant protein was captured through anti-DDK affinity column followed by conventional chromatography steps.

Note: For testing in cell culture applications, please filter before use. Note that you may experience some loss of protein during the filtration process.

Storage: Store at -80°C.

Stability: Stable for 12 months from the date of receipt of the product under proper storage and handling conditions. Avoid repeated freeze-thaw cycles.

RefSeq: [NP_004628](#)

Locus ID: 7879

UniProt ID: [P51149](#), [A0A158RFU6](#)

RefSeq Size: 2240



[View online »](#)

Cytogenetics: 3q21.3

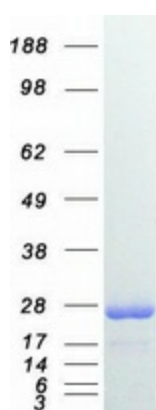
RefSeq ORF: 621

Synonyms: CMT2B; PRO2706; RAB7

Summary: RAB family members are small, RAS-related GTP-binding proteins that are important regulators of vesicular transport. Each RAB protein targets multiple proteins that act in exocytic / endocytic pathways. This gene encodes a RAB family member that regulates vesicle traffic in the late endosomes and also from late endosomes to lysosomes. This encoded protein is also involved in the cellular vacuolation of the VacA cytotoxin of *Helicobacter pylori*. Mutations at highly conserved amino acid residues in this gene have caused some forms of Charcot-Marie-Tooth (CMT) type 2 neuropathies. [provided by RefSeq, Jul 2008]

Protein Families: Druggable Genome

Product images:



Coomassie blue staining of purified RAB7A protein (Cat# [TP301776]). The protein was produced from HEK293T cells transfected with RAB7A cDNA clone (Cat# [RC201776]) using MegaTran 2.0 (Cat# [TT210002]).