

Product datasheet for TP301776

RAB7 (RAB7A) (NM_004637) Human Recombinant Protein

Product data:

Product Type:	Recombinant Proteins
Description:	Recombinant protein of human RAB7A, member RAS oncogene family (RAB7A), 20 µg
Species:	Human
Expression Host:	HEK293T
Expression cDNA Clone or AA Sequence:	>RC201776 protein sequence Red =Cloning site Green =Tags(s)
	<p>MTSRKKVLLKVIILGDSGVGKTSLMNQYVNNKFSNQYKATIGADFLTKEVMVDDRLVTMQIWDTAGQERF QSLGVAFYRGADCCVLVFDVTAPNTFKTLD SWRDEF LIQASPRDPENFPFVWLG NKIDLENRQVATKRAQ AWCYSKNNIPYFETSAKEAINVEQAFQTIARNALKQETEVELYNEFFPEPIKLDKNDRAKASAESCSC</p> <p>TRTRPLEQKLISEEDLAANDILDYKDDDDKV</p>
Tag:	C-Myc/DDK
Predicted MW:	23.3 kDa
Concentration:	>0.05 µg/µL as determined by microplate BCA method
Purity:	> 80% as determined by SDS-PAGE and Coomassie blue staining
Buffer:	25 mM Tris-HCl, 100 mM glycine, pH 7.3, 10% glycerol
Preparation:	Recombinant protein was captured through anti-DDK affinity column followed by conventional chromatography steps.
Note:	For testing in cell culture applications, please filter before use. Note that you may experience some loss of protein during the filtration process.
Storage:	Store at -80°C.
Stability:	Stable for 12 months from the date of receipt of the product under proper storage and handling conditions. Avoid repeated freeze-thaw cycles.
RefSeq:	NP_004628
Locus ID:	7879
UniProt ID:	P51149
RefSeq Size:	2240



[View online »](#)

Cytogenetics: 3q21.3

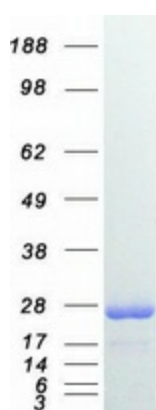
RefSeq ORF: 621

Synonyms: CMT2B; PRO2706; RAB7

Summary: RAB family members are small, RAS-related GTP-binding proteins that are important regulators of vesicular transport. Each RAB protein targets multiple proteins that act in exocytic / endocytic pathways. This gene encodes a RAB family member that regulates vesicle traffic in the late endosomes and also from late endosomes to lysosomes. This encoded protein is also involved in the cellular vacuolation of the VacA cytotoxin of *Helicobacter pylori*. Mutations at highly conserved amino acid residues in this gene have caused some forms of Charcot-Marie-Tooth (CMT) type 2 neuropathies. [provided by RefSeq, Jul 2008]

Protein Families: Druggable Genome

Product images:



Coomassie blue staining of purified RAB7A protein (Cat# TP301776). The protein was produced from HEK293T cells transfected with RAB7A cDNA clone (Cat# [RC201776]) using MegaTran 2.0 (Cat# [TT210002]).