

## Product datasheet for TP301772L

### HEAB (CLP1) (NM\_006831) Human Recombinant Protein

#### Product data:

Product Type:	Recombinant Proteins
Description:	Recombinant protein of human CLP1, cleavage and polyadenylation factor I subunit, homolog ( <i>S. cerevisiae</i> ) (CLP1), transcript variant 1, 1 mg
Species:	Human
Expression Host:	HEK293T
Expression cDNA Clone or AA Sequence:	>RC201772 protein sequence Red=Cloning site Green=Tags(s)
	<p>MGEEANDDKKPTTKFELERETELRFEVEASQSVQLELLTGMAEIFGTELTRNKKFTFDAGAKVAVFTWHG            CSVQLSGRTEVAYVSKDTPMLLYLNTHTALEQMRRQAEKEEERGPRVMVVGPTDVGKSTVCRLLLNAYVR            LGRRPTYVELDVGQGSVSIPGTMGALYIERPADVEEGFSIQAPLVYHFGSTTPGTNIKLYNKITSRLADV            FNQRCEVNRRASVSGCVINTCGWVKGSGYQALVHAASAFEVDVWVLDQERLYNELKRDLPHFVRTVLLP            KSGGVERSDFRRECRDERIREYFYGFRGCFYPHAFNVKFSVDVKIYKVGAPTIPDSCLPLGMSQEDNQL            KLVPVTPGRDMVHHLLSVSTAEGTEENLSETSVAGFIVVTSVDLEHQVFTVLSAPRPLPKNFLLIMDIR            FMDLK</p> <p>TRTRPLEQKLISEEDLAANDILDYKDDDDKV</p>
Tag:	C-Myc/DDK
Predicted MW:	47.5 kDa
Concentration:	>0.05 µg/µL as determined by microplate BCA method
Purity:	> 80% as determined by SDS-PAGE and Coomassie blue staining
Buffer:	25 mM Tris-HCl, 100 mM glycine, pH 7.3, 10% glycerol
Preparation:	Recombinant protein was captured through anti-DDK affinity column followed by conventional chromatography steps.
Note:	For testing in cell culture applications, please filter before use. Note that you may experience some loss of protein during the filtration process.
Storage:	Store at -80°C.
Stability:	Stable for 12 months from the date of receipt of the product under proper storage and handling conditions. Avoid repeated freeze-thaw cycles.



[View online »](#)

RefSeq: [NP\\_006822](#)

Locus ID: 10978

UniProt ID: [Q92989](#)

RefSeq Size: 1864

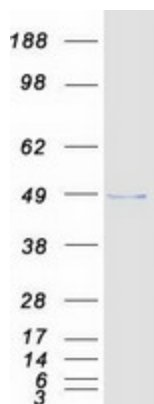
Cytogenetics: 11q12.1

RefSeq ORF: 1275

Synonyms: hClp1; HEAB

**Summary:** This gene encodes a member of the Clp1 family. The encoded protein is a multifunctional kinase which is a component of the tRNA splicing endonuclease complex and a component of the pre-mRNA cleavage complex II. This protein is implicated in tRNA, mRNA, and siRNA maturation. Mutations in this gene are associated with pontocerebellar hypoplasia type 10 (PCH10). Alternatively splice transcript variants encoding different isoforms have been found for this gene. [provided by RefSeq, Sep 2014]

### Product images:



Coomassie blue staining of purified CLP1 protein (Cat# [TP301772]). The protein was produced from HEK293T cells transfected with CLP1 cDNA clone (Cat# [RC201772]) using MegaTran 2.0 (Cat# [TT210002]).