

## Product datasheet for **TP301770M**

### WDR46 (NM\_005452) Human Recombinant Protein

#### Product data:

Product Type:	Recombinant Proteins
Description:	Recombinant protein of human WD repeat domain 46 (WDR46), 100 µg
Species:	Human
Expression Host:	HEK293T
Expression cDNA Clone or AA Sequence:	>RC201770 protein sequence <span style="color: red;">Red</span> =Cloning site <span style="color: green;">Green</span> =Tags(s)

METAPKPGKDVPPKKDKLQTKRKKPRRYWEEETVPTTAGASPGPPRNKKNRELRPQRPKNAYILKKSRI  
 KKPQVPKKPREWKNPESQRLSGAQDPFPGPAPVPVEVWQKFCRIDKSRKLPKSHAKTRSRLEVAEAE  
 ETSIKAARSELLAEPPGFLEGEDGEDTAKICQADIVEAVDIASAAKHFDLNLQRQGPYRLNYSRTGRHL  
 AFGGRRGHVAALDWVTKKLMCEINVMEAVRDIRFLHSEALLAVAQNRWLHIYDNQGIELHCIRRC  
 LEFLPFHLLATASETGFLTYLDVSVGKIVAALNARAGRLDVMSQNPYNAVIHLGHSNGTVSLWSPAMKE  
 PLAKILCHRGGVRAVAVDSTGYMATSGLDHQLKIFDLRGTYQPLSTRTPHGAGHLAFSQRGLLVAGMG  
 DVVNIWAGQGKASPPSLEQPYLTHRLSGPVHGLQFCPFEDVLGVGHTGGITSMLVPGAGEPNFDGLES  
 N  
 YRSRQQRQEWVKALLEKVPALICLDPRALAEVDVISLEQGGKEQIERLGYPQAKAPFQPKPKQKGRS  
 STASLVKRKRKVMDEEHRDKVRQSLQQQHHKEAKAKPTGARPSALDRFVR

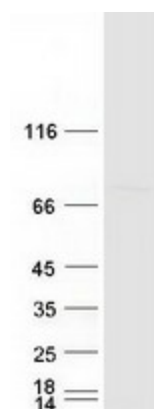
TRTRPLEQKLISEEDLAANDILDYKDDDDKV

Tag:	C-Myc/DDK
Predicted MW:	67.9 kDa
Concentration:	>0.05 µg/µL as determined by microplate BCA method
Purity:	> 80% as determined by SDS-PAGE and Coomassie blue staining
Buffer:	25 mM Tris-HCl, 100 mM glycine, pH 7.3, 10% glycerol
Preparation:	Recombinant protein was captured through anti-DDK affinity column followed by conventional chromatography steps.
Note:	For testing in cell culture applications, please filter before use. Note that you may experience some loss of protein during the filtration process.
Storage:	Store at -80°C.


[View online »](#)

<b>Stability:</b>	Stable for 12 months from the date of receipt of the product under proper storage and handling conditions. Avoid repeated freeze-thaw cycles.
<b>RefSeq:</b>	<u>NP_005443</u>
<b>Locus ID:</b>	9277
<b>UniProt ID:</b>	<u>O15213</u>
<b>RefSeq Size:</b>	2363
<b>Cytogenetics:</b>	6p21.32
<b>RefSeq ORF:</b>	1830
<b>Synonyms:</b>	BING4; C6orf11; FP221; UTP7
<b>Summary:</b>	Scaffold component of the nucleolar structure. Required for localization of DDX21 and NCL to the granular compartment of the nucleolus.[UniProtKB/Swiss-Prot Function]
<b>Protein Families:</b>	Druggable Genome

### Product images:



Coomassie blue staining of purified WDR46 protein (Cat# [TP301770]). The protein was produced from HEK293T cells transfected with WDR46 cDNA clone (Cat# [RC201770]) using MegaTran 2.0 (Cat# [TT210002]).