

Product datasheet for **TP301770L**

WDR46 (NM_005452) Human Recombinant Protein

Product data:

| | |
|---------------------------------------|--|
| Product Type: | Recombinant Proteins |
| Description: | Recombinant protein of human WD repeat domain 46 (WDR46), 1 mg |
| Species: | Human |
| Expression Host: | HEK293T |
| Expression cDNA Clone or AA Sequence: | >RC201770 protein sequence Red =Cloning site Green =Tags(s) |

METAPKPGKDVPPKKDKLQTKRKKPRRYWEEETVPTTAGASPGPPRNKKNRELRPQRPKNAYILKKSRI
KKPQVPPKPREWKNPESQRGLSGAQDPFPGPAPVPVEVWQKFCRIDKSRKLPKSHKAKTRSRLEVAEAE
ETSIKAARSELLLAEEPGFLEGEDGEDTAKICQADIVEAVDIASAAKHFDLNLRFQGPYRLNYSRTGRHL
AFGGRRGHVAALDWVTKKLMCEINVMEAVRDIRFLHSEALLAVAQNRWLHIYDNQGIELHCIRRCDRVTR
LEFLPFHLLATASETGLTYLDVSVGKIVAALNARAGRLDVMSQNPYNAVIHLGHSNGTVSLWSPAMKE
PLAKILCHRGGVRAVAVDSTGTYMATSGLDHQLKIFDLRGTYQPLSTRTPHGAGHLAFSQRGLLVAGMG
DVVNIWAGQGKASPPSLEQPYLTHRLSGPVHGLQFCPFEDVLGVGHTGGITSMLVPGAGEPNFDGLESNP
YRSRKQRQEWKALLEKVPALICLDPRALAEVDVISLEQGGKEQIERLGYDPQAKAPFQPKPKQKGRS
STASLVKRKRKVMDEEHRDKVRQSLQQQHHKEAKAKPTGARPSALDRFVR

TRTRPLEQKLISEEDLAANDILDYKDDDDKV

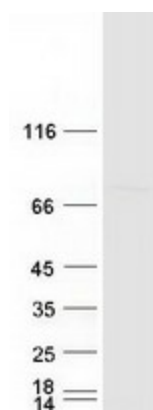
| | |
|----------------|--|
| Tag: | C-Myc/DDK |
| Predicted MW: | 67.9 kDa |
| Concentration: | >0.05 µg/µL as determined by microplate BCA method |
| Purity: | > 80% as determined by SDS-PAGE and Coomassie blue staining |
| Buffer: | 25 mM Tris-HCl, 100 mM glycine, pH 7.3, 10% glycerol |
| Preparation: | Recombinant protein was captured through anti-DDK affinity column followed by conventional chromatography steps. |
| Note: | For testing in cell culture applications, please filter before use. Note that you may experience some loss of protein during the filtration process. |
| Storage: | Store at -80°C. |



[View online »](#)

| | |
|--------------------------|--|
| Stability: | Stable for 12 months from the date of receipt of the product under proper storage and handling conditions. Avoid repeated freeze-thaw cycles. |
| RefSeq: | NP_005443 |
| Locus ID: | 9277 |
| UniProt ID: | O15213 , A8K806 |
| RefSeq Size: | 2363 |
| Cytogenetics: | 6p21.32 |
| RefSeq ORF: | 1830 |
| Synonyms: | BING4; C6orf11; FP221; UTP7 |
| Summary: | Scaffold component of the nucleolar structure. Required for localization of DDX21 and NCL to the granular compartment of the nucleolus.[UniProtKB/Swiss-Prot Function] |
| Protein Families: | Druggable Genome |

Product images:



Coomassie blue staining of purified WDR46 protein (Cat# [TP301770]). The protein was produced from HEK293T cells transfected with WDR46 cDNA clone (Cat# [RC201770]) using MegaTran 2.0 (Cat# [TT210002]).