

Product datasheet for **TP301743L**

IKK gamma (IKBKG) (NM_003639) Human Recombinant Protein

Product data:

Product Type:	Recombinant Proteins
Description:	Recombinant protein of human inhibitor of kappa light polypeptide gene enhancer in B-cells, kinase gamma (IKBKG), transcript variant 3, 1 mg
Species:	Human
Expression Host:	HEK293T
Expression cDNA Clone or AA Sequence:	>RC201743 protein sequence Red =Cloning site Green =Tags(s)
	MNRHLWKSQ LCEMVQPSGGPAADQDVLGEESPLGKPAMLHLPSEQGAPETLQRCLEENQELRDAIRQSNQ ILRERCELLHFQASQREEKEFLMCKFQEARLVERLGLKLDLKRQKEQALREVEHLKRCQQQMAEDKA SVKAQVTSLLGELQESQSRLEAATKECQALEGRARAASEQARQLESEREALQQQHSVQVDQLRMQGSVE AALRMERQAASEEKRLAQLQVAYHQLFQEYDNHIKSSVVGSRKRGMLQLEDLKQQLQQAEEALVAKQEV IDKLKEEAQHKIVMETVPVLKAQADIYKADFQAERQAREKLAEKKELLQEQLQREYSKLGKASCQES ARIEDMRKRHVEVSQAPLPPAPAYLSSPLALPSQRRSPPEEPPDFCCPKCQYQAPDMDTLQIHVMCEIE TRTRPLEQKLISEEDLAANDILDYKDDDDKV
Tag:	C-Myc/DDK
Predicted MW:	48 kDa
Concentration:	>0.05 µg/µL as determined by microplate BCA method
Purity:	> 80% as determined by SDS-PAGE and Coomassie blue staining
Buffer:	25 mM Tris-HCl, 100 mM glycine, pH 7.3, 10% glycerol
Preparation:	Recombinant protein was captured through anti-DDK affinity column followed by conventional chromatography steps.
Note:	For testing in cell culture applications, please filter before use. Note that you may experience some loss of protein during the filtration process.
Storage:	Store at -80°C.
Stability:	Stable for 12 months from the date of receipt of the product under proper storage and handling conditions. Avoid repeated freeze-thaw cycles.
RefSeq:	<u>NP_003630</u>



[View online »](#)

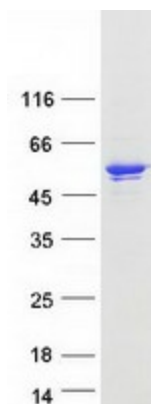
Locus ID:	8517
UniProt ID:	Q9Y6K9
RefSeq Size:	2123
Cytogenetics:	Xq28
RefSeq ORF:	1257
Synonyms:	AMCBX1; EDAID1; FIP-3; FIP3; Fip3p; IKK-gamma; IKKAP1; IKKG; IMD33; IP; IP1; IP2; IPD2; NEMO; ZC2HC9

Summary: This gene encodes the regulatory subunit of the inhibitor of kappaB kinase (IKK) complex, which activates NF-kappaB resulting in activation of genes involved in inflammation, immunity, cell survival, and other pathways. Mutations in this gene result in incontinentia pigmenti, hypohidrotic ectodermal dysplasia, and several other types of immunodeficiencies. A pseudogene highly similar to this locus is located in an adjacent region of the X chromosome. [provided by RefSeq, Mar 2016]

Protein Families: Druggable Genome, Transcription Factors

Protein Pathways: Acute myeloid leukemia, Adipocytokine signaling pathway, Apoptosis, B cell receptor signaling pathway, Chemokine signaling pathway, Chronic myeloid leukemia, Cytosolic DNA-sensing pathway, Epithelial cell signaling in Helicobacter pylori infection, MAPK signaling pathway, NOD-like receptor signaling pathway, Pancreatic cancer, Pathways in cancer, Primary immunodeficiency, Prostate cancer, RIG-I-like receptor signaling pathway, Small cell lung cancer, T cell receptor signaling pathway, Toll-like receptor signaling pathway

Product images:



Coomassie blue staining of purified IKBKG protein (Cat# [TP301743]). The protein was produced from HEK293T cells transfected with IKBKG cDNA clone (Cat# [RC201743]) using MegaTran 2.0 (Cat# [TT210002]).