

## Product datasheet for TP301738M

### Thimet Oligopeptidase (THOP1) (NM\_003249) Human Recombinant Protein

#### Product data:

Product Type:	Recombinant Proteins
Description:	Recombinant protein of human thimet oligopeptidase 1 (THOP1), 100 µg
Species:	Human
Expression Host:	HEK293T
Expression cDNA Clone or AA Sequence:	>RC201738 protein sequence Red=Cloning site Green=Tags(s)

MKPPAACAGDMADAASPCSVNDLRWDLAQQIEERTRELIEQTKRVYDQVGTQEFEDVSYESTLKALAD  
VEVTTYVQRNILDFPQHVSPSKDIRTASTEADKKLSEFDVEMSMREDVYQRIVWLQEKVQKDSLREPEAR  
YLERLIKLGRRNGLHLPRETQENIKRIKKLSLLCIDFNKNLNEDTFLPFTLQELGGLPEDFLNSLEKM  
EDGKLVTLKYPHYFLLKCHVPETRRKVEEAFNCRCKEENCAILKELVTLRAQKSRLLGFHTHADYVL  
EMNMAKTSQTVATFLDELAQKLPKPLGEQERAVILELKRAECERRGLPFDGRIRAWDMRYMNMNQEETRYC  
VDQNLLKEYFPVQWTHGLLGIYQELLGLAFHHEEGASAWHEDVRLYTARDAASGEVVGKFYLDLYPREG  
KYGHAACFGLQPGCLRQDGSRQIAIAAMVANFTKPTADAPSLQHDDEVITYFHEFGHVMHQLCSQAEFAM  
FSGTHVERDFVEAPSQMLENWWWEQEPLLRMSRHYRTGSAVPRELLEKLIESRQANTGLFNLRQIVLAKV  
DQALHTQTDADPAEEYARLCQEILGVPATPGTNMPATFGHLAGGYDAQYYGYLWSEVYSMDMFHTRFKQE  
GVLNSKVGMDYRSCILRPGGSEDASAMLRRLGRDPKQDAFLLSKGLQVGGCEPEPQVC

SGPTRRPLEQKLISEEDLAANDILDYKDDDDKV

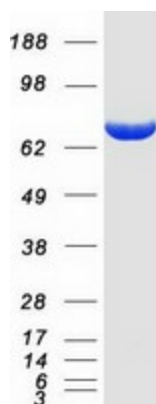
Tag:	C-Myc/DDK
Predicted MW:	78.7 kDa
Concentration:	>0.05 µg/µL as determined by microplate BCA method
Purity:	> 80% as determined by SDS-PAGE and Coomassie blue staining
Buffer:	25 mM Tris-HCl, 100 mM glycine, pH 7.3, 10% glycerol
Preparation:	Recombinant protein was captured through anti-DDK affinity column followed by conventional chromatography steps.
Note:	For testing in cell culture applications, please filter before use. Note that you may experience some loss of protein during the filtration process.
Storage:	Store at -80°C.



[View online »](#)

<b>Stability:</b>	Stable for 12 months from the date of receipt of the product under proper storage and handling conditions. Avoid repeated freeze-thaw cycles.
<b>RefSeq:</b>	<a href="#">NP_003240</a>
<b>Locus ID:</b>	7064
<b>UniProt ID:</b>	<a href="#">P52888</a>
<b>RefSeq Size:</b>	2568
<b>Cytogenetics:</b>	19p13.3
<b>RefSeq ORF:</b>	2067
<b>Synonyms:</b>	EP24.15; MEPD_HUMAN; MP78; TOP
<b>Summary:</b>	The protein encoded by this gene is a kinase that uses zinc as a cofactor. The encoded oligopeptidase cleaves cytosolic peptides, making them unavailable for display on antigen-presenting cells. This protein also cleaves neuropeptides under 20 aa in length and can degrade beta-amyloid precursor protein to amyloidogenic peptides. [provided by RefSeq, Nov 2015]
<b>Protein Families:</b>	Druggable Genome, Protease
<b>Protein Pathways:</b>	Renin-angiotensin system

### Product images:



Coomassie blue staining of purified THOP1 protein (Cat# [TP301738]). The protein was produced from HEK293T cells transfected with THOP1 cDNA clone (Cat# [RC201738]) using MegaTran 2.0 (Cat# [TT210002]).