

Product datasheet for TP301738L

Thimet Oligopeptidase (THOP1) (NM_003249) Human Recombinant Protein

Product data:

Product Type:	Recombinant Proteins
Description:	Recombinant protein of human thimet oligopeptidase 1 (THOP1), 1 mg
Species:	Human
Expression Host:	HEK293T
Expression cDNA Clone or AA Sequence:	>RC201738 protein sequence Red =Cloning site Green =Tags(s)

MKPPAACAGDMADAASPCSVNDLRWDLAQQIEERTRELIEQTKRVYDQVGTQEFEDVSYESTLKALAD
VEVTTYVQRNILDFFQHVSPSKDIRTASTEADKKLSEFDVEMSMREDVYQRIVWLQEKVQKDSLREPEAR
YLERLIKLGRRNGLHLPRETQENIKRIKKLSLLCIDFNKNLNEDTFLPFTLQELGGLPEDFLNSLEKM
EDGKLVTLKYPHYFLLKKCHVPETRRKVEEAFNCRCKEENCAILKELVTLRAQKSRLLGFHTHADYVL
EMNMAKTSQTVATFLDELAQKLPKPLGEQERAVILELKRAECERRGLPFDGRIRAWDMRYMNMNQEETRYC
VDQNLLKEYFPVQWTHGLLGIYQELLGLAFHHEEGASAWHEDVRLYTARDAASGEVVGKFDLYDPREG
KYGHAACFGLQPGCLRQDGSRQIAIAAMVANFTKPTADAPSLQHDDEVETYFHEFGHVMHQLCSQAEFAM
FSGTHVERDFVEAPSQMLENWWWEQEPLLRMSRHYRTGSAVPRELLEKLIESRQANTGLFNLRQIVLAKV
DQALHTQTDADPAEEYARLCQEILGVPATPGTNMPATFGHLAGGYDAQYYGYLWSEVYSMDMFHTRFKQE
GVLNSKVGMDYRSCILRPGGSEDASAMLRRLGRDPKQDAFLLSKGLQVGGCEPEPQVC

SGPTRRPLEQKLISEEDLAANDILDYKDDDDKV

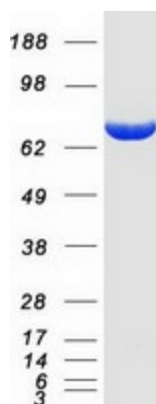
Tag:	C-Myc/DDK
Predicted MW:	78.7 kDa
Concentration:	>0.05 µg/µL as determined by microplate BCA method
Purity:	> 80% as determined by SDS-PAGE and Coomassie blue staining
Buffer:	25 mM Tris-HCl, 100 mM glycine, pH 7.3, 10% glycerol
Preparation:	Recombinant protein was captured through anti-DDK affinity column followed by conventional chromatography steps.
Note:	For testing in cell culture applications, please filter before use. Note that you may experience some loss of protein during the filtration process.
Storage:	Store at -80°C.



[View online »](#)

Stability:	Stable for 12 months from the date of receipt of the product under proper storage and handling conditions. Avoid repeated freeze-thaw cycles.
RefSeq:	NP_003240
Locus ID:	7064
UniProt ID:	P52888
RefSeq Size:	2568
Cytogenetics:	19p13.3
RefSeq ORF:	2067
Synonyms:	EP24.15; MEPD_HUMAN; MP78; TOP
Summary:	The protein encoded by this gene is a kinase that uses zinc as a cofactor. The encoded oligopeptidase cleaves cytosolic peptides, making them unavailable for display on antigen-presenting cells. This protein also cleaves neuropeptides under 20 aa in length and can degrade beta-amyloid precursor protein to amyloidogenic peptides. [provided by RefSeq, Nov 2015]
Protein Families:	Druggable Genome, Protease
Protein Pathways:	Renin-angiotensin system

Product images:



Coomassie blue staining of purified THOP1 protein (Cat# [TP301738]). The protein was produced from HEK293T cells transfected with THOP1 cDNA clone (Cat# [RC201738]) using MegaTran 2.0 (Cat# [TT210002]).