

## Product datasheet for TP301738

### Thimet Oligopeptidase (THOP1) (NM\_003249) Human Recombinant Protein

#### Product data:

**Product Type:** Recombinant Proteins

**Description:** Recombinant protein of human thimet oligopeptidase 1 (THOP1), 20 µg

**Species:** Human

**Expression Host:** HEK293T

**Expression cDNA Clone** >RC201738 protein sequence

**or AA Sequence:** **Red**=Cloning site **Green**=Tags(s)

MKPPAACAGDMADAASPCSVNDLRWDLAQQIEERTRELIEQTKRVYDQVGTQEFEDVSYESTLKALAD  
VEVITYTVQRNILDFFQHVSPSKDIRTASTEADKKLSEFDVEMSMREDVYQRIVWLQEKVQKDSLREAAAR  
YLERLIKLGRRNGLHLPRETQENIKRIKKLSLLCIDFNKNLNEDTFLPFTLQELGGLPEDFLNSLEKM  
EDGKLVTLKYPHYFLLKKCHVPETRRKVEEAFNCRCKEENCAILKELVTLRAQKSRLLGFHTHADYVL  
EMNMAKTSQTVATFLDELAQKPKPLGEQERAVILELKRAECERRGLPFDGRIRAWDMRYMNMNQEETRYC  
VDQNLLKEYFPVQWTHGLLGIYQELLGLAFHHEEGASAWHEDVRLYTARDAASGEVVGKFYLDLYPREG  
KYGHAACFGLQPGCLRQDGSRQIAIAAMVANFTKPTADAPSLQHDDEVITYFHEFGHVMHQLCSQAEFAM  
FSGTHVERDFVEAPSQMLENWWWEQEPLLRMSRHYRTGSAVPRELLEKLIESRQANTGLFNLRQIVLAKV  
DQALHTQTDADPAEEYARLCQEILGVPATPGTNMPATFGHLAGGYDAQYYGYLWSEVYSMDMFHTRFKQE  
GVLNSKVGMDYRSCILRPGGSEDASAMLRRLGRDPKQDAFLLSKGLQVGGCEPEPQVC

**SGPTRRPLEQKLISEEDLAANDILDYKDDDDKV**

**Tag:** C-Myc/DDK

**Predicted MW:** 78.7 kDa

**Concentration:** >0.05 µg/µL as determined by microplate BCA method

**Purity:** > 80% as determined by SDS-PAGE and Coomassie blue staining

**Buffer:** 25 mM Tris-HCl, 100 mM glycine, pH 7.3, 10% glycerol

**Preparation:** Recombinant protein was captured through anti-DDK affinity column followed by conventional chromatography steps.

**Note:** For testing in cell culture applications, please filter before use. Note that you may experience some loss of protein during the filtration process.

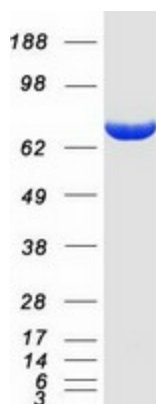
**Storage:** Store at -80°C.



[View online »](#)

<b>Stability:</b>	Stable for 12 months from the date of receipt of the product under proper storage and handling conditions. Avoid repeated freeze-thaw cycles.
<b>RefSeq:</b>	<a href="#">NP_003240</a>
<b>Locus ID:</b>	7064
<b>UniProt ID:</b>	<a href="#">P52888</a>
<b>RefSeq Size:</b>	2568
<b>Cytogenetics:</b>	19p13.3
<b>RefSeq ORF:</b>	2067
<b>Synonyms:</b>	EP24.15; MEPD_HUMAN; MP78; TOP
<b>Summary:</b>	The protein encoded by this gene is a kinase that uses zinc as a cofactor. The encoded oligopeptidase cleaves cytosolic peptides, making them unavailable for display on antigen-presenting cells. This protein also cleaves neuropeptides under 20 aa in length and can degrade beta-amyloid precursor protein to amyloidogenic peptides. [provided by RefSeq, Nov 2015]
<b>Protein Families:</b>	Druggable Genome, Protease
<b>Protein Pathways:</b>	Renin-angiotensin system

### Product images:



Coomassie blue staining of purified THOP1 protein (Cat# TP301738). The protein was produced from HEK293T cells transfected with THOP1 cDNA clone (Cat# [RC201738]) using MegaTran 2.0 (Cat# [TT210002]).