

Product datasheet for TP301728M

NTF2 (NUTF2) (NM_005796) Human Recombinant Protein

Product data:

Product Type:	Recombinant Proteins
Description:	Recombinant protein of human nuclear transport factor 2 (NUTF2), 100 µg
Species:	Human
Expression Host:	HEK293T
Expression cDNA Clone or AA Sequence:	>RC201728 protein sequence Red =Cloning site Green =Tags(s) MGDKPIWEQIGSSFIQHYYQLFDNDRTQLGAIYIDASCLTWEGQQFQGKAAIVEKLSSLPFQKIQHSITA QDHQPTPDSCIISMVVGQLKADEDPIMGFHQMFLKNINDAWVCTNDMFRLALHNFG SGPTRTRPLE QKLISEEDLA ANDILDYKDDDDKV
Tag:	C-Myc/DDK
Predicted MW:	14.3 kDa
Concentration:	>0.05 µg/µL as determined by microplate BCA method
Purity:	> 80% as determined by SDS-PAGE and Coomassie blue staining
Buffer:	25 mM Tris-HCl, 100 mM glycine, pH 7.3, 10% glycerol
Preparation:	Recombinant protein was captured through anti-DDK affinity column followed by conventional chromatography steps.
Note:	For testing in cell culture applications, please filter before use. Note that you may experience some loss of protein during the filtration process.
Storage:	Store at -80°C.
Stability:	Stable for 12 months from the date of receipt of the product under proper storage and handling conditions. Avoid repeated freeze-thaw cycles.
RefSeq:	NP_005787
Locus ID:	10204
UniProt ID:	P61970
RefSeq Size:	894
Cytogenetics:	16q22.1

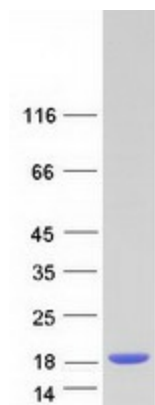

[View online »](#)

RefSeq ORF: 381

Synonyms: NTF-2; NTF2; PP15

Summary: This gene encodes a cytosolic factor that facilitates protein transport into the nucleus. The encoded protein is required for nuclear import of the small Ras-like GTPase, Ran which is involved in numerous cellular processes. This protein also interacts with the nuclear pore complex glycoprotein p62. [provided by RefSeq, Apr 2016]

Product images:



Coomassie blue staining of purified NUTF2 protein (Cat# [TP301728]). The protein was produced from HEK293T cells transfected with NUTF2 cDNA clone (Cat# [RC201728]) using MegaTran 2.0 (Cat# [TT210002]).