

Product datasheet for **TP301726L**

EIF2D (NM_006893) Human Recombinant Protein

Product data:

Product Type:	Recombinant Proteins
Description:	Recombinant protein of human ligatin (LGTN), 1 mg
Species:	Human
Expression Host:	HEK293T
Expression cDNA Clone or AA Sequence:	>RC201726 protein sequence Red =Cloning site Green =Tags(s)

MFAKAFRVKSNTAIKGSDDRRKLRADVTTAFPTLGTDQVSELVPGKEELNIVKLYAHKGDVTVVYVSGGNP
ILFELEKNLYPTVYTLWSYPDLLPTFTTWPLVLEKLVGGADLMLPGLVMPPAGLPQVQKGDLCALVGN
RAPVAIGVAAMSTAEMLTSGLKGRGFSVLHTYQDHLWRSNGKSSPPSIAPLALDSADLSEEKGSVQMDST
LQGDMRHMTLEGEEENGVEVHQAREDKSLSEAPEDTSTRGLNQDSTDSKTLQEQMDELLQQCFLHALKCRV
KKADLPLLTSTFLGSHMFSCCEGRQLDIKSSYKLSKFLQMQQEIIQVKELSKGVESIVAVDWKHP
RITSFVIPEPSPTSQTIQEGSREQPYHPPDIKPLYCVPASMTLLFQESGHKKGSFLEGSEVRTIVINYAK
KNDLVDADNKNLVRLDPILCDCILEKNEQHTVMKLPWDSLLTRCLEKLQPAYQVTLPGQEPVKKGRICP
IDITLAQRASNKKVTVVRNLEAYGLDPYSVAAILQQRCASTTVNPAPGAKDSLQVQIQGNQVHHLGWLL
LEEYQLPRKHIQGLEKALKPGKKK

TRTRPLEQKLISEEDLAANDILDYKDDDDKV

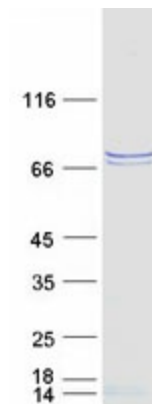
Tag:	C-Myc/DDK
Predicted MW:	64.5 kDa
Concentration:	>0.05 µg/µL as determined by microplate BCA method
Purity:	> 80% as determined by SDS-PAGE and Coomassie blue staining
Buffer:	25 mM Tris-HCl, 100 mM glycine, pH 7.3, 10% glycerol
Preparation:	Recombinant protein was captured through anti-DDK affinity column followed by conventional chromatography steps.
Note:	For testing in cell culture applications, please filter before use. Note that you may experience some loss of protein during the filtration process.
Storage:	Store at -80°C.



[View online »](#)

Stability:	Stable for 12 months from the date of receipt of the product under proper storage and handling conditions. Avoid repeated freeze-thaw cycles.
RefSeq:	NP_008824
Locus ID:	1939
UniProt ID:	P41214
RefSeq Size:	2115
Cytogenetics:	1q32.1
RefSeq ORF:	1752
Synonyms:	HCA56; LGTN
Summary:	This gene encodes a translation initiation factor involved in the recruitment and delivery of aminoacyl-tRNAs to the P-site of the eukaryotic ribosome in a GTP-independent manner. This gene was previously referred to as ligatin, but is now known to localize to the cytoplasm and localize and function with translation factors. Multiple transcript variants encoding different isoforms have been found for this gene. [provided by RefSeq, Jan 2011]
Protein Families:	Druggable Genome

Product images:



Coomassie blue staining of purified EIF2D protein (Cat# [TP301726]). The protein was produced from HEK293T cells transfected with EIF2D cDNA clone (Cat# [RC201726]) using MegaTran 2.0 (Cat# [TT210002]).