

## Product datasheet for TP301726

### EIF2D (NM\_006893) Human Recombinant Protein

#### Product data:

**Product Type:** Recombinant Proteins  
**Description:** Recombinant protein of human ligatin (LGTN), 20 µg  
**Species:** Human  
**Expression Host:** HEK293T  
**Expression cDNA Clone or AA Sequence:** >RC201726 protein sequence  
**Red**=Cloning site **Green**=Tags(s)

MFAKAFRVKSNTAIKGSDDRRKLRADVTTAFPTLGTDQVSELVPGKEELNIVKLYAHKGDVTVVYVSGGNP  
ILFELEKNLYPTVYTLWSYPDLLPTFTTWPLVLEKLVGGADLMLPGLVMPPAGLPQVQKGDLCALSVGN  
RAPVAIGVAAMSTAEMLTSGLKGRGFSVLHTYQDHLWRSNGKSSPPSIAPLALDSADLSEEKGSVQMDST  
LQGDMRHMTLEGEEENGVEVHQAREDKSLSEAPEDTSTRGLNQDSTDSKTLQEQMDELLQQCFLHALKCRV  
KKADLPLLTSTFLGSHMFSCCPEGRQLDIKSSYKLSKFLQMQQEIIQVKELSKGVESIVAVDWKHP  
RITSFVIPEPSPTSQTIQEGSREQPYHPPDIKPLYCVPASMTLLFQESGHKKGSFLEGSEVRTIVINYAK  
KNDLVDADNKNLVRLDPILCDCILEKNEQHTVMKLPWDSLLTRCLEKLQPAYQVTLPGQEPVKKGRICP  
IDITLAQRASNKKVTVRNLEAYGLDPYSVAAILQQRCASTTVNPAPGAKDSLQVQIQGNQVHHLGWLL  
LEEYQLPRKHIQGLEKALKPGKKK

**TRTRPLEQKLISEEDLAANDILDYKDDDDKV**

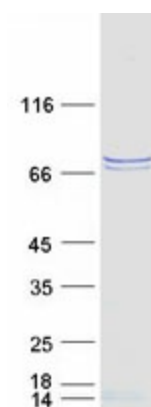
**Tag:** C-Myc/DDK  
**Predicted MW:** 64.5 kDa  
**Concentration:** >0.05 µg/µL as determined by microplate BCA method  
**Purity:** > 80% as determined by SDS-PAGE and Coomassie blue staining  
**Buffer:** 25 mM Tris-HCl, 100 mM glycine, pH 7.3, 10% glycerol  
**Preparation:** Recombinant protein was captured through anti-DDK affinity column followed by conventional chromatography steps.  
**Note:** For testing in cell culture applications, please filter before use. Note that you may experience some loss of protein during the filtration process.  
**Storage:** Store at -80°C.



[View online »](#)

<b>Stability:</b>	Stable for 12 months from the date of receipt of the product under proper storage and handling conditions. Avoid repeated freeze-thaw cycles.
<b>RefSeq:</b>	<a href="#">NP_008824</a>
<b>Locus ID:</b>	1939
<b>UniProt ID:</b>	<a href="#">P41214</a>
<b>RefSeq Size:</b>	2115
<b>Cytogenetics:</b>	1q32.1
<b>RefSeq ORF:</b>	1752
<b>Synonyms:</b>	HCA56; LGTN
<b>Summary:</b>	This gene encodes a translation initiation factor involved in the recruitment and delivery of aminoacyl-tRNAs to the P-site of the eukaryotic ribosome in a GTP-independent manner. This gene was previously referred to as ligatin, but is now known to localize to the cytoplasm and localize and function with translation factors. Multiple transcript variants encoding different isoforms have been found for this gene. [provided by RefSeq, Jan 2011]
<b>Protein Families:</b>	Druggable Genome

### Product images:



Coomassie blue staining of purified EIF2D protein (Cat# TP301726). The protein was produced from HEK293T cells transfected with EIF2D cDNA clone (Cat# [RC201726]) using MegaTran 2.0 (Cat# [TT210002]).