

## Product datasheet for **TP301722M**

### **RHOD (NM\_014578) Human Recombinant Protein**

#### Product data:

**Product Type:** Recombinant Proteins

**Description:** Recombinant protein of human ras homolog gene family, member D (RHOD), 100 µg

**Species:** Human

**Expression Host:** HEK293T

**Expression cDNA Clone or AA Sequence:** >RC201722 protein sequence  
**Red**=Cloning site **Green**=Tags(s)

MTAAQAAGEEAPPGVRSVKVVLVGDGGCGKTSLLMFADGAFPESYTPTVFERYMVNLQVKGKPVHLHIW  
DTAGQDDYDRLRPLFYPDASVLLLCFDVTSPNSFDNIFNRWYPEVNHFCCKVPIIIVGCKTDLRKDKSLV  
NKLRRNGLEPVTYHRGQEMARSVGAVAYLECSARLHDNVHAVFQEAAEVALSSRGRNFWRITQGFVWT

**TRTRPLEQKLISEEDLAANDILDYKDDDDKV**

**Tag:** C-Myc/DDK

**Predicted MW:** 23.3 kDa

**Concentration:** >0.05 µg/µL as determined by microplate BCA method

**Purity:** > 80% as determined by SDS-PAGE and Coomassie blue staining

**Buffer:** 25 mM Tris-HCl, 100 mM glycine, pH 7.3, 10% glycerol

**Preparation:** Recombinant protein was captured through anti-DDK affinity column followed by conventional chromatography steps.

**Note:** For testing in cell culture applications, please filter before use. Note that you may experience some loss of protein during the filtration process.

**Storage:** Store at -80°C.

**Stability:** Stable for 12 months from the date of receipt of the product under proper storage and handling conditions. Avoid repeated freeze-thaw cycles.

**RefSeq:** [NP\\_055393](#)

**Locus ID:** 29984

**UniProt ID:** [O00212](#)

**RefSeq Size:** 1150



[View online »](#)

Cytogenetics: 11q13.2

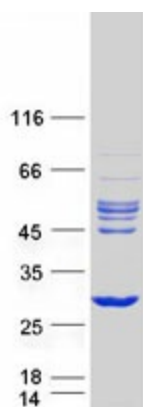
RefSeq ORF: 630

Synonyms: ARHD; Rho; RHOHP1; RHOM

**Summary:** Ras homolog, or Rho, proteins interact with protein kinases and may serve as targets for activated GTPase. They play a critical role in muscle differentiation. The protein encoded by this gene binds GTP and is a member of the small GTPase superfamily. It is involved in endosome dynamics and reorganization of the actin cytoskeleton, and it may coordinate membrane transport with the function of the cytoskeleton. Two transcript variants encoding different isoforms have been found for this gene. [provided by RefSeq, Jul 2014]

**Protein Pathways:** Axon guidance

### Product images:



Coomassie blue staining of purified RHOD protein (Cat# [TP301722]). The protein was produced from HEK293T cells transfected with RHOD cDNA clone (Cat# [RC201722]) using MegaTran 2.0 (Cat# [TT210002]).