

Product datasheet for TP301702M

CDC5L (NM_001253) Human Recombinant Protein

Product data:

Product Type:	Recombinant Proteins
Description:	Recombinant protein of human CDC5 cell division cycle 5-like (<i>S. pombe</i>) (CDC5L), 100 µg
Species:	Human
Expression Host:	HEK293T
Expression cDNA Clone or AA Sequence:	>RC201702 protein sequence Red=Cloning site Green=Tags(s)

MPRIMIKGGVWRNTEDEILKAAVMKYGKNQWSRIASLLHRKSAKQCKARWYEWLDPSIKKTEWSREEEK
LLHLAKLMPTQWRTIPIIGRTAAQCLEHYEFLLDKAAQRDNEEETDDPRKLPGEIDPNPETKPARPD
PIDMDELEMLSEARLANTQGKKAKRKAREKQLEEARRLAALQKRRELAAGIEIQKKRKRKRGVDY
NAEIPFEKKPALGFYDTSEENYQALDADFRKLRQQDLGELRSEKEGRDRKKDKQHLKRKESDLP
SAILQTSGVSEFTKKRSKLVLPAPQISDAELQEVVKVQASEIARQTAEESGITNSASTLLSEYNVTNNSVAL
RTPRTPASQDRILQEAQNLMAITNVDTPLKGGGLNTPHESDFSGVTPQRQVVQTPNTVLSTPFRTPSNGA
EGLTPRSGLTPKPVINSTPGRTPLRDKLNINPEDGMADYSDPSYVKQMERESREHLRLGLLPAPKDNF
EIVLPENAEKELEEREIDDTYIEDAADVDARKQAIRDAERVKEMKRMHKAQKDLPRPSEVNETILRPLN
VEPPLTDLQKSEELIKKEMITMLHYDLLHHPYEPSGNKKGKTVGFGTNNSEHITYLEHNPYEKFKEELK
KAQDVLVQEMEVKQGMESHGELSSEAYNQVWEECYQVLYLPGQSRYTRANLASKKDRIESLEKRLEINR
GHMTTEAKRAAKMEKKMKILLGGYQSRAMGLMKQLNDLWDQIEQAHLELRTFEELKKHEDSAIPRRLECL
KEDVQRQKERELQHRYADLLEKETLKSFK

TRTRPLEQKLISEEDLAANDILDYKDDDDKV

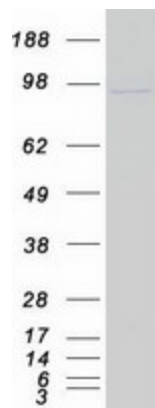
Tag:	C-Myc/DDK
Predicted MW:	92.1 kDa
Concentration:	>0.05 µg/µL as determined by microplate BCA method
Purity:	> 80% as determined by SDS-PAGE and Coomassie blue staining
Buffer:	25 mM Tris-HCl, 100 mM glycine, pH 7.3, 10% glycerol
Preparation:	Recombinant protein was captured through anti-DDK affinity column followed by conventional chromatography steps.
Note:	For testing in cell culture applications, please filter before use. Note that you may experience some loss of protein during the filtration process.



[View online »](#)

Storage:	Store at -80°C.
Stability:	Stable for 12 months from the date of receipt of the product under proper storage and handling conditions. Avoid repeated freeze-thaw cycles.
RefSeq:	NP_001244
Locus ID:	988
UniProt ID:	Q99459
RefSeq Size:	6432
Cytogenetics:	6p21.1
RefSeq ORF:	2406
Synonyms:	CDC5; CDC5-LIKE; CEF1; dj319D22.1; PCDC5RP
Summary:	The protein encoded by this gene shares a significant similarity with <i>Schizosaccharomyces pombe</i> <i>cdc5</i> gene product, which is a cell cycle regulator important for G2/M transition. This protein has been demonstrated to act as a positive regulator of cell cycle G2/M progression. It was also found to be an essential component of a non-snRNA spliceosome, which contains at least five additional protein factors and is required for the second catalytic step of pre-mRNA splicing. [provided by RefSeq, Jul 2008]
Protein Families:	Transcription Factors
Protein Pathways:	Spliceosome

Product images:



Coomassie blue staining of purified CDC5L protein (Cat# [TP301702]). The protein was produced from HEK293T cells transfected with CDC5L cDNA clone (Cat# [RC201702]) using MegaTran 2.0 (Cat# [TT210002]).