

Product datasheet for TP301702L

CDC5L (NM_001253) Human Recombinant Protein

Product data:

| | |
|---------------------------------------|--|
| Product Type: | Recombinant Proteins |
| Description: | Recombinant protein of human CDC5 cell division cycle 5-like (<i>S. pombe</i>) (CDC5L), 1 mg |
| Species: | Human |
| Expression Host: | HEK293T |
| Expression cDNA Clone or AA Sequence: | >RC201702 protein sequence Red=Cloning site Green=Tags(s) |

MPRIMIKGGVWRNTEDEILKAAVMKYGKNQWSRIASLLHRKSAKQCKARWYEWLDPSEIKKTEWSREEEK
LLHLAKLMPTQWRTIPIIGRTAAQCLEHYEFLLDKAAQRDNEEETDDPRKLPGEIDPNPETKPARPD
PIDMDELEMLSEARLANTQGKKAKRKAREKQLEEARRLAALQKRRELAAGIEIQKKRKRKRGVDY
NAEIPFEKKPALGFYDTSEENYQALDADFRKLRQQDLGELRSEKEGRDRKKDKQHLKRKESDLP
SAILQTSGVSEFTKKRSKLVLPAPQISDAELQEVVKGQASEIARQTAEESGITNSASTLLSEYNVTNNSVAL
RTPRTPASQDRILQEAQNLMAITNVDTPLKGGGLNTPHESDFSGVTPQRQVQTPNTVLSTPFRTPSNGA
EGLTPRSGLTPKPVINSTPGRTPLRDKLNINPEDGMADYSDPSYVKQMERESREHLRLGLLPAPKNDP
EIVLPENAEKELEEREIDDTYIEDAADVDARKQAIRDAERVKEMKRMHKAQKDLPRPSEVNETILRPLN
VEPPLTDLQKSEELIKKEMITMLHYDLLHHPYPSGNKKGKTVGFGTNNSEHITYLEHNPYEKFSKEELK
KAQDVLVQEMEVKQGMESHGELSSEAYNQVWEECYQVLYLPGQSRYTRANLASKKDRIESLEKRLEINR
GHMTTEAKRAAKMEKKMKILLGGYQSRAMGLMKQLNDLWDQIEQAHLELRTFEELKKHEDSAIPRRLECL
KEDVQRQKERELQHRYADLLEKETLKSFK

TRTRPLEQKLISEEDLAANDILDYKDDDDKV

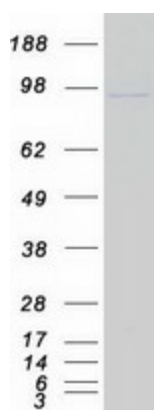
| | |
|----------------|--|
| Tag: | C-Myc/DDK |
| Predicted MW: | 92.1 kDa |
| Concentration: | >0.05 µg/µL as determined by microplate BCA method |
| Purity: | > 80% as determined by SDS-PAGE and Coomassie blue staining |
| Buffer: | 25 mM Tris-HCl, 100 mM glycine, pH 7.3, 10% glycerol |
| Preparation: | Recombinant protein was captured through anti-DDK affinity column followed by conventional chromatography steps. |
| Note: | For testing in cell culture applications, please filter before use. Note that you may experience some loss of protein during the filtration process. |



[View online »](#)

| | |
|--------------------------|---|
| Storage: | Store at -80°C. |
| Stability: | Stable for 12 months from the date of receipt of the product under proper storage and handling conditions. Avoid repeated freeze-thaw cycles. |
| RefSeq: | NP_001244 |
| Locus ID: | 988 |
| UniProt ID: | Q99459 |
| RefSeq Size: | 6432 |
| Cytogenetics: | 6p21.1 |
| RefSeq ORF: | 2406 |
| Synonyms: | CDC5; CDC5-LIKE; CEF1; dj319D22.1; PCDC5RP |
| Summary: | The protein encoded by this gene shares a significant similarity with <i>Schizosaccharomyces pombe</i> <i>cdc5</i> gene product, which is a cell cycle regulator important for G2/M transition. This protein has been demonstrated to act as a positive regulator of cell cycle G2/M progression. It was also found to be an essential component of a non-snRNA spliceosome, which contains at least five additional protein factors and is required for the second catalytic step of pre-mRNA splicing. [provided by RefSeq, Jul 2008] |
| Protein Families: | Transcription Factors |
| Protein Pathways: | Spliceosome |

Product images:



Coomassie blue staining of purified CDC5L protein (Cat# [TP301702]). The protein was produced from HEK293T cells transfected with CDC5L cDNA clone (Cat# [RC201702]) using MegaTran 2.0 (Cat# [TT210002]).