

## Product datasheet for TP301702

### CDC5L (NM\_001253) Human Recombinant Protein

#### Product data:

Product Type:	Recombinant Proteins
Description:	Recombinant protein of human CDC5 cell division cycle 5-like ( <i>S. pombe</i> ) (CDC5L), 20 µg
Species:	Human
Expression Host:	HEK293T
Expression cDNA Clone or AA Sequence:	>RC201702 protein sequence Red=Cloning site Green=Tags(s)

MPRIMIKGGVWRNTEDEILKAAVMKYGKNQWSRIASLLHRKSAKQCKARWYEWLDPSIKKTEWSREEEEK  
LLHLAKLMPTQWRTIPIIGRTAAQCLEHYEFLLDKAAQRDNEEETDDPRKLPGEIDPNPETKPARPD  
PIDMDELEMLSEARLANTQGKKAKRKAREKQLEEARRLAALQKRRELAAGIEIQKKRKRKRGVDY  
NAEIPFEKKPALGFYDTSEENYQALDADFRKLRQQDLGELRSEKEGRDRKKDKQHLKRKKESDLP  
SAILQTSGVSEFTKKRSKLVLPAPQISDAELQEVVKVQASEIARQTAESGITNSASTLLSEYNVTNNSVAL  
RTPRTPASQDRILQEAQNLMAITNVDTPKGGGLNTPHESDFSGVTPQRQVQTPNTVLSTPFRTPSNGA  
EGLTPRSGLTPKPVINSTPGRTPLRDKLNINPEDGMADYSDPSYVKQMERESREHLRLGLLGLPAPKND  
F EIVLPENAEKELEEREIDDTYIEDAADVDARKQAIRDAERVKEMKRMHKAQKDLPRPSEVNETILRPLN  
VEPPLTDLQKSEELIKKEMITMLHYDLLHHPYEPSGNKKGKTVGFGTNNSEHITYLEHNPYEKFKEELK  
KAQDVLVQEMEVKQGMESHGELSSEAYNQVWEECYQVLYLPGQSRYTRANLASKKDRIESLEKRLEINR  
GHMTTEAKRAAKMEKKMKILLGGYQSRAMGLMKQLNDLWDQIEQAHLELRTFEELKKHEDSAIPRRLECL  
KEDVQRQKERELQHRYADLLEKETLKSFK

TRTRPLEQKLISEEDLAANDILDYKDDDDKV

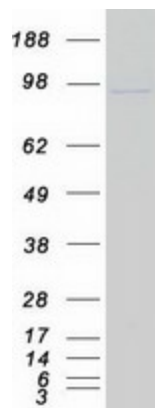
Tag:	C-Myc/DDK
Predicted MW:	92.1 kDa
Concentration:	>0.05 µg/µL as determined by microplate BCA method
Purity:	> 80% as determined by SDS-PAGE and Coomassie blue staining
Buffer:	25 mM Tris-HCl, 100 mM glycine, pH 7.3, 10% glycerol
Preparation:	Recombinant protein was captured through anti-DDK affinity column followed by conventional chromatography steps.
Note:	For testing in cell culture applications, please filter before use. Note that you may experience some loss of protein during the filtration process.



[View online »](#)

<b>Storage:</b>	Store at -80°C.
<b>Stability:</b>	Stable for 12 months from the date of receipt of the product under proper storage and handling conditions. Avoid repeated freeze-thaw cycles.
<b>RefSeq:</b>	<a href="#">NP_001244</a>
<b>Locus ID:</b>	988
<b>UniProt ID:</b>	<a href="#">Q99459</a>
<b>RefSeq Size:</b>	6432
<b>Cytogenetics:</b>	6p21.1
<b>RefSeq ORF:</b>	2406
<b>Synonyms:</b>	CDC5; CDC5-LIKE; CEF1; dj319D22.1; PCDC5RP
<b>Summary:</b>	The protein encoded by this gene shares a significant similarity with <i>Schizosaccharomyces pombe</i> <i>cdc5</i> gene product, which is a cell cycle regulator important for G2/M transition. This protein has been demonstrated to act as a positive regulator of cell cycle G2/M progression. It was also found to be an essential component of a non-snRNA spliceosome, which contains at least five additional protein factors and is required for the second catalytic step of pre-mRNA splicing. [provided by RefSeq, Jul 2008]
<b>Protein Families:</b>	Transcription Factors
<b>Protein Pathways:</b>	Spliceosome

### Product images:



Coomassie blue staining of purified CDC5L protein (Cat# TP301702). The protein was produced from HEK293T cells transfected with CDC5L cDNA clone (Cat# [RC201702]) using MegaTran 2.0 (Cat# [TT210002]).