

Product datasheet for **TP301696M**

BCL7B (NM_001707) Human Recombinant Protein

Product data:

Product Type: Recombinant Proteins

Description: Recombinant protein of human B-cell CLL/lymphoma 7B (BCL7B), 100 µg

Species: Human

Expression Host: HEK293T

Expression cDNA Clone or AA Sequence: >RC201696 protein sequence
Red=Cloning site **Green**=Tags(s)

MSGRSVRAETRSRAKDDIKKVMMAIEKVRKWEKKWVTVGDTSLRIFKWVPVTDTSKEKEKSKSNSSAAREP
NGFPSDASANSSLLLEFQDENSNQSSVSDVYQLKVDSSSTNSSPSPQQSESLSPAHTSDFRTDDSQPPTLG
QEILEEPSLPSSEVADEPPTLTKEEPVPLETQVVEEEEDSGAPPLKRFCVDQPTVPQTASES

TRTRPLEQKLISEEDLAANDILDYKDDDDKV

Tag: C-Myc/DDK

Predicted MW: 22 kDa

Concentration: >0.05 µg/µL as determined by microplate BCA method

Purity: > 80% as determined by SDS-PAGE and Coomassie blue staining

Buffer: 25 mM Tris-HCl, 100 mM glycine, pH 7.3, 10% glycerol

Preparation: Recombinant protein was captured through anti-DDK affinity column followed by conventional chromatography steps.

Note: For testing in cell culture applications, please filter before use. Note that you may experience some loss of protein during the filtration process.

Storage: Store at -80°C.

Stability: Stable for 12 months from the date of receipt of the product under proper storage and handling conditions. Avoid repeated freeze-thaw cycles.

RefSeq: [NP_001698](#)

Locus ID: 9275

UniProt ID: [Q9BQE9](#)

RefSeq Size: 1729



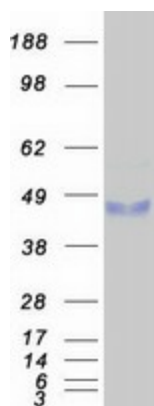
[View online »](#)

Cytogenetics: 7q11.23

RefSeq ORF: 606

Summary: This gene encodes a member of the BCL7 family including BCL7A, BCL7B and BCL7C proteins. This member is BCL7B, which contains a region that is highly similar to the N-terminal segment of BCL7A or BCL7C proteins. The BCL7A protein is encoded by the gene known to be directly involved in a three-way gene translocation in a Burkitt lymphoma cell line. This gene is located at a chromosomal region commonly deleted in Williams syndrome. This gene is highly conserved from *C. elegans* to human. Multiple alternatively spliced transcript variants have been found for this gene. [provided by RefSeq, Oct 2010]

Product images:



Coomassie blue staining of purified BCL7B protein (Cat# [TP301696]). The protein was produced from HEK293T cells transfected with BCL7B cDNA clone (Cat# [RC201696]) using MegaTran 2.0 (Cat# [TT210002]).