

## Product datasheet for **TP301696L**

### **BCL7B (NM\_001707) Human Recombinant Protein**

#### Product data:

**Product Type:** Recombinant Proteins

**Description:** Recombinant protein of human B-cell CLL/lymphoma 7B (BCL7B), 1 mg

**Species:** Human

**Expression Host:** HEK293T

**Expression cDNA Clone or AA Sequence:** >RC201696 protein sequence  
**Red**=Cloning site **Green**=Tags(s)

MSGRSVRAETRSRAKDDIKKVMMAIEKVRKWEKKWVTVGDTSLRIFKWVPVTDTSKEKEKSKSNSSAAREP  
NGFPSDASANSSLLLEFQDENSNQSSVSDVYQLKVDSSNSSPSPQQSESLSPAHTSDFRTDDSQPPTLG  
QEILEEPSLPSSEVADEPPTLTKEEPVPLETQVVEEEDSGAPPLKRFCVDQPTVPQTASES

**TRTRPLEQKLISEEDLAANDILDYKDDDDKV**

**Tag:** C-Myc/DDK

**Predicted MW:** 22 kDa

**Concentration:** >0.05 µg/µL as determined by microplate BCA method

**Purity:** > 80% as determined by SDS-PAGE and Coomassie blue staining

**Buffer:** 25 mM Tris-HCl, 100 mM glycine, pH 7.3, 10% glycerol

**Preparation:** Recombinant protein was captured through anti-DDK affinity column followed by conventional chromatography steps.

**Note:** For testing in cell culture applications, please filter before use. Note that you may experience some loss of protein during the filtration process.

**Storage:** Store at -80°C.

**Stability:** Stable for 12 months from the date of receipt of the product under proper storage and handling conditions. Avoid repeated freeze-thaw cycles.

**RefSeq:** [NP\\_001698](#)

**Locus ID:** 9275

**UniProt ID:** [Q9BQE9](#)

**RefSeq Size:** 1729



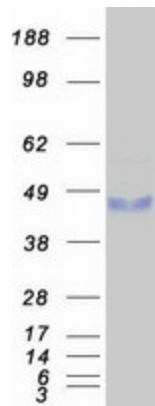
[View online »](#)

Cytogenetics: 7q11.23

RefSeq ORF: 606

**Summary:** This gene encodes a member of the BCL7 family including BCL7A, BCL7B and BCL7C proteins. This member is BCL7B, which contains a region that is highly similar to the N-terminal segment of BCL7A or BCL7C proteins. The BCL7A protein is encoded by the gene known to be directly involved in a three-way gene translocation in a Burkitt lymphoma cell line. This gene is located at a chromosomal region commonly deleted in Williams syndrome. This gene is highly conserved from *C. elegans* to human. Multiple alternatively spliced transcript variants have been found for this gene. [provided by RefSeq, Oct 2010]

### Product images:



Coomassie blue staining of purified BCL7B protein (Cat# [TP301696]). The protein was produced from HEK293T cells transfected with BCL7B cDNA clone (Cat# [RC201696]) using MegaTran 2.0 (Cat# [TT210002]).