

## Product datasheet for **TP301676**

### **SUGT1 (NM\_006704) Human Recombinant Protein**

#### Product data:

Product Type:	Recombinant Proteins
Description:	Recombinant protein of human SGT1, suppressor of G2 allele of SKP1 ( <i>S. cerevisiae</i> ) (SUGT1), transcript variant 2, 20 µg
Species:	Human
Expression Host:	HEK293T
Expression cDNA Clone or AA Sequence:	>RC201676 protein sequence <b>Red</b> =Cloning site <b>Green</b> =Tags(s)

MAAAAAGTATSQRFFQSFSDALIDEDPQAAL EELTKALEQKPDDAQYYCQRAYCHILLGNYCVAVADAKK  
SLELNPNNSTAMLRKGICEYHEKNYAAALETFT EGQKLSADANFSVWIKRCQEAQNGSESEVWTHQSKI  
KYDWYQTESQWITLMIKNVQKNDVNVEFSEKELSALVKLPSGEDYNLKLLELLHPIIPEQSTFKVLSTKI  
EIKLKKPEAVRWEKLEGQGDVPTPKQFVADVKNLYPSSSPYTRNWDKLVGEIKEEEKNEKLEGDAALNRL  
FQQIYSDGSDEVKRAMNKSFMESGGTVLSTNWS DVGKRKVEINPPDDMEWKKY

**TR**TRPLEQKLISEEDLAANDILDYKDDDDKV

Tag:	C-Myc/DDK
Predicted MW:	37.6 kDa
Concentration:	>0.05 µg/µL as determined by microplate BCA method
Purity:	> 80% as determined by SDS-PAGE and Coomassie blue staining
Buffer:	25 mM Tris-HCl, 100 mM glycine, pH 7.3, 10% glycerol
Preparation:	Recombinant protein was captured through anti-DDK affinity column followed by conventional chromatography steps.
Note:	For testing in cell culture applications, please filter before use. Note that you may experience some loss of protein during the filtration process.
Storage:	Store at -80°C.
Stability:	Stable for 12 months from the date of receipt of the product under proper storage and handling conditions. Avoid repeated freeze-thaw cycles.
RefSeq:	<a href="#">NP_006695</a>
Locus ID:	10910



[View online »](#)

UniProt ID: [Q9Y2Z0](#), [A8K7W3](#)

RefSeq Size: 1705

Cytogenetics: 13q14.3

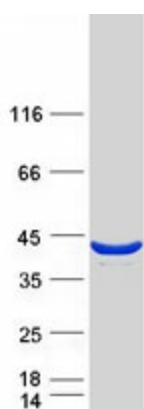
RefSeq ORF: 999

Synonyms: SGT1

**Summary:** This gene encodes a highly conserved nuclear protein involved in kinetochore function and required for the G1/S and G2/M transitions. This protein interacts with heat shock protein 90. Alternative splicing results in multiple transcript variants. Pseudogenes for this gene have been defined on several different chromosomes. [provided by RefSeq, Mar 2016]

**Protein Pathways:** NOD-like receptor signaling pathway

### Product images:



Coomassie blue staining of purified SUGT1 protein (Cat# TP301676). The protein was produced from HEK293T cells transfected with SUGT1 cDNA clone (Cat# [RC201676]) using MegaTran 2.0 (Cat# [TT210002]).