

## Product datasheet for **TP301674**

### **PDLIM1 (NM\_020992) Human Recombinant Protein**

#### **Product data:**

**Product Type:** Recombinant Proteins

**Description:** Recombinant protein of human PDZ and LIM domain 1 (PDLIM1), 20 µg

**Species:** Human

**Expression Host:** HEK293T

**Expression cDNA Clone or AA Sequence:** >RC201674 protein sequence  
**Red**=Cloning site **Green**=Tags(s)

MTTQQIDLQGGPGPWGFRVLVGGKDFEQPLAISRVTPGSKAALANLCIGDVITAIDGENTSNMTHLEAQNRI  
KGCTDNLTLTVARSEHKVWSPLVTEEGKRHPYKMNLASEPQEV LHIGSAHNRSAMPFTASPASSTARVI  
TNQYNNPAGLYSSENISNFNNALESKTAASGVEANSRPLDHAQPPSSLVIDKESEVYKMLQEKLNEPP  
KQSTSFLVLQEILESEEKGDPNKPSGFRSVKAPVTKVAASIGNAQKLPMDCKCGTGIVGVFVKLRDRHRH  
PECYVCTDCGTNLKQKGHFFVEDQIYCEKHARERVTPPEGYEVVTFPK

**TR**TRPLEQKLISEEDLAANDILDYKDDDDKV

**Tag:** C-Myc/DDK

**Predicted MW:** 35.9 kDa

**Concentration:** >0.05 µg/µL as determined by microplate BCA method

**Purity:** > 80% as determined by SDS-PAGE and Coomassie blue staining

**Buffer:** 25 mM Tris-HCl, 100 mM glycine, pH 7.3, 10% glycerol

**Preparation:** Recombinant protein was captured through anti-DDK affinity column followed by conventional chromatography steps.

**Note:** For testing in cell culture applications, please filter before use. Note that you may experience some loss of protein during the filtration process.

**Storage:** Store at -80°C.

**Stability:** Stable for 12 months from the date of receipt of the product under proper storage and handling conditions. Avoid repeated freeze-thaw cycles.

**RefSeq:** [NP\\_066272](#)

**Locus ID:** 9124



[View online »](#)

UniProt ID: [O00151, V9HW92](#)

RefSeq Size: 1598

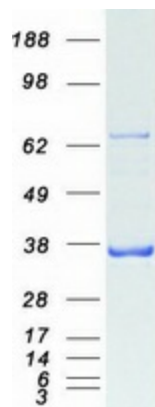
Cytogenetics: 10q23.33

RefSeq ORF: 987

Synonyms: CLIM1; CLP-36; CLP36; hCLIM1; HEL-S-112

**Summary:** This gene encodes a member of the enigma protein family. The protein contains two protein interacting domains, a PDZ domain at the amino terminal end and one to three LIM domains at the carboxyl terminal. It is a cytoplasmic protein associated with the cytoskeleton. The protein may function as an adapter to bring other LIM-interacting proteins to the cytoskeleton. Pseudogenes associated with this gene are located on chromosomes 3, 14 and 17. [provided by RefSeq, Oct 2012]

### Product images:



Coomassie blue staining of purified PDLIM1 protein (Cat# TP301674). The protein was produced from HEK293T cells transfected with PDLIM1 cDNA clone (Cat# [RC201674]) using MegaTran 2.0 (Cat# [TT210002]).