

## Product datasheet for **TP301670M**

### Plastin L (LCP1) (NM\_002298) Human Recombinant Protein

#### Product data:

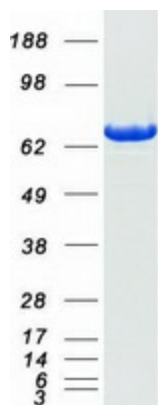
Product Type:	Recombinant Proteins
Description:	Recombinant protein of human lymphocyte cytosolic protein 1 (L-plastin) (LCP1), 100 µg
Species:	Human
Expression Host:	HEK293T
Expression cDNA Clone or AA Sequence:	>RC201670 protein sequence <b>Red</b> =Cloning site <b>Green</b> =Tags(s)
	MARGSVSDEEMMELREAFKVDTDGNGYISFNELNDFKAACLPLPGYRVREITENLMATGDLDQDGRIS FDEFIKIFHGLKSTDVAKTFRKAINKKEGICAIGGTSEQSSVGTQHSYSEEEKYAFVNWINKALENDPDC RHVIPMNPNTNDFNAVGDGIVLCKMINLSVPTIDERTINKKKLTPFTIQENLNLALNSASAIGCHVVN IGAEDLKEGKPYLVLLWQVIKIGLFADIELSRNEALIALLRREGESLEDLMKLSPEELLRWANYHLEN AGCNKIGNFSTDIKDSKAYYHLEQVAPKGDDEEGVPAVIDMSGLREKDDIQRACMLQQAERLGCRCQFV TATDWRGNPKLNLAFIANLFNRYPALHKPENQDIDWGALEGETREERTFRNWMNSLGVNPRVNHLYSDL SDALVIFQLYEKIKVPVDWNRVKNPPYPKLGGMKKLENCNYAVELGKNQAKFSLVGIGGGQDLNEGNRTL TLALIWQLMRRYTLNILEEIGGGQKVNDDIIVNWVNETLREAESSSSFKDPKISTSLPVLDLIDAIQ PGSINYDLLKTENLNDEKLNNAKYAISMARIGARVYALPEDLVEVNPKMVMTVFACLMGKGMKRV
	<b>TRTRPLEQKLISEEDLAANDILDYKDDDDKV</b>
Tag:	C-Myc/DDK
Predicted MW:	70.1 kDa
Concentration:	>0.05 µg/µL as determined by microplate BCA method
Purity:	> 80% as determined by SDS-PAGE and Coomassie blue staining
Buffer:	25 mM Tris-HCl, 100 mM glycine, pH 7.3, 10% glycerol
Bioactivity:	Enzyme substrate (PMID: <a href="#">25881549</a> )
Preparation:	Recombinant protein was captured through anti-DDK affinity column followed by conventional chromatography steps.
Note:	For testing in cell culture applications, please filter before use. Note that you may experience some loss of protein during the filtration process.
Storage:	Store at -80°C.



[View online »](#)

<b>Stability:</b>	Stable for 12 months from the date of receipt of the product under proper storage and handling conditions. Avoid repeated freeze-thaw cycles.
<b>RefSeq:</b>	<a href="#">NP_002289</a>
<b>Locus ID:</b>	3936
<b>UniProt ID:</b>	<a href="#">P13796</a> , <a href="#">A0A024RDT4</a>
<b>RefSeq Size:</b>	3808
<b>Cytogenetics:</b>	13q14.13
<b>RefSeq ORF:</b>	1881
<b>Synonyms:</b>	CP64; HEL-S-37; L-PLASTIN; LC64P; LPL; PLS2
<b>Summary:</b>	Plastins are a family of actin-binding proteins that are conserved throughout eukaryote evolution and expressed in most tissues of higher eukaryotes. In humans, two ubiquitous plastin isoforms (L and T) have been identified. Plastin 1 (otherwise known as Fimbrin) is a third distinct plastin isoform which is specifically expressed at high levels in the small intestine. The L isoform is expressed only in hemopoietic cell lineages, while the T isoform has been found in all other normal cells of solid tissues that have replicative potential (fibroblasts, endothelial cells, epithelial cells, melanocytes, etc.). However, L-plastin has been found in many types of malignant human cells of non-hemopoietic origin suggesting that its expression is induced accompanying tumorigenesis in solid tissues. [provided by RefSeq, Jul 2008]

### Product images:



Coomassie blue staining of purified LCP1 protein (Cat# [TP301670]). The protein was produced from HEK293T cells transfected with LCP1 cDNA clone (Cat# [RC201670]) using MegaTran 2.0 (Cat# [TT210002]).