

Product datasheet for **TP301670L**

Plastin L (LCP1) (NM_002298) Human Recombinant Protein

Product data:

Product Type: Recombinant Proteins

Description: Recombinant protein of human lymphocyte cytosolic protein 1 (L-plastin) (LCP1), 1 mg

Species: Human

Expression Host: HEK293T

Expression cDNA Clone or AA Sequence: >RC201670 protein sequence
Red=Cloning site **Green**=Tags(s)

MARGSVSDEEMMELREAFKVDTDGNGYISFNELNDFKAACLPLPGYRVREITENLMATGDLDQDGRIS
FDEFIKIFHGLKSTDVAKTFRKAINKKEGICAIGGTSEQSSVGTQHSYSEEEKYAFVNWINKALENDPDC
RHVIPMNPNTNDFNAVGDGIVLCKMINLSVPTIDERTINKKLTPTFIQENLNALNSASAIGCHVVN
IGAEDLKEGKPYLVLLWQVIKIGLFADIELSRNEALIALLRGESLEDLMKLSPEELLRWANYHLEN
AGCNKIGNFSTDIKDSKAYYHLEQVAPKGDDEEGVPAVIDMSGLREKDDIQRACMLQQAERLGCRCQFV
TATDWRGNPKLNLAFIANLFNRYPALHKPENQDIDWGALEGETREERTFRNWMNSLGVNPRVNHLYSDL
SDALVIFQLYEKIKVPVDWNRVKNPPYPKLGGMKKLENCYAVELGKNQAKFSLVGIGGGQDLNEGNRTL
TLALIWQLMRRYTLNILEEIGGGQKVNDDIIVNWVNETLREAESSSSFKDPKISTSLPVLDLIDAIQ
PGSINYDLLKTENLNDEKLNNAKYAISMARIGARVYALPEDLVEVNPKMVMTVFACLMGKGMKRV

TRTRPLEQKLISEEDLAANDILDYKDDDDKV

Tag: C-Myc/DDK

Predicted MW: 70.1 kDa

Concentration: >0.05 µg/µL as determined by microplate BCA method

Purity: > 80% as determined by SDS-PAGE and Coomassie blue staining

Buffer: 25 mM Tris-HCl, 100 mM glycine, pH 7.3, 10% glycerol

Bioactivity: Enzyme substrate (PMID: [25881549](#))

Preparation: Recombinant protein was captured through anti-DDK affinity column followed by conventional chromatography steps.

Note: For testing in cell culture applications, please filter before use. Note that you may experience some loss of protein during the filtration process.

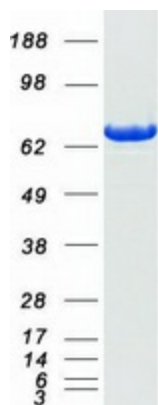
Storage: Store at -80°C.



[View online »](#)

Stability:	Stable for 12 months from the date of receipt of the product under proper storage and handling conditions. Avoid repeated freeze-thaw cycles.
RefSeq:	NP_002289
Locus ID:	3936
UniProt ID:	P13796 , A0A024RDT4
RefSeq Size:	3808
Cytogenetics:	13q14.13
RefSeq ORF:	1881
Synonyms:	CP64; HEL-S-37; L-PLASTIN; LC64P; LPL; PLS2
Summary:	Plastins are a family of actin-binding proteins that are conserved throughout eukaryote evolution and expressed in most tissues of higher eukaryotes. In humans, two ubiquitous plastin isoforms (L and T) have been identified. Plastin 1 (otherwise known as Fimbrin) is a third distinct plastin isoform which is specifically expressed at high levels in the small intestine. The L isoform is expressed only in hemopoietic cell lineages, while the T isoform has been found in all other normal cells of solid tissues that have replicative potential (fibroblasts, endothelial cells, epithelial cells, melanocytes, etc.). However, L-plastin has been found in many types of malignant human cells of non-hemopoietic origin suggesting that its expression is induced accompanying tumorigenesis in solid tissues. [provided by RefSeq, Jul 2008]

Product images:



Coomassie blue staining of purified LCP1 protein (Cat# [TP301670]). The protein was produced from HEK293T cells transfected with LCP1 cDNA clone (Cat# [RC201670]) using MegaTran 2.0 (Cat# [TT210002]).