

Product datasheet for TP301670

Plastin L (LCP1) (NM_002298) Human Recombinant Protein

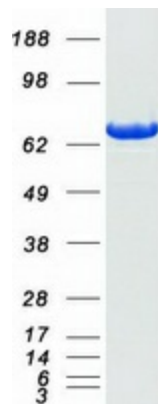
Product data:

Product Type:	Recombinant Proteins
Description:	Recombinant protein of human lymphocyte cytosolic protein 1 (L-plastin) (LCP1), 20 µg
Species:	Human
Expression Host:	HEK293T
Expression cDNA Clone or AA Sequence:	>RC201670 protein sequence Red =Cloning site Green =Tags(s) MARGSVSDEEMMELREAFKVDTDGNGYISFNELNDLFKAACLPLPGYRVREITENLMATGDLDDQDGRIS FDEFIKIFHGLKSTDVAKTRKAINKKEGICAIGGTSEQSSVGTQHSYSEEEKYAFVNWINKALENDPDC RHVPMNPNTNDLFNAVGDGIVLCKMINLSVPDITDERTINKKKLTPFTIQENLNLALNSASAIGCHVVN IGAEDLKEGKPYLVLLWQVIKIGLFADIELSRNEALIALREGESLEDLMKLSPEELLRWANYHLEN AGCNKIGNFSTDIKDSKAYYHLEQVAPKGDEEGVPAVIDMSGLEKDDIQRAECMLQQAERLGCRQFV TATDVVRGNPKLNLAFLANLFRYPALHKPENQDIDWGALEGETREERTFRNWMNSLGVNPRVNHLYSD L SDALVIFQLYEKIKVPVDWNRVNKPPYPKLGGNMKKLENCNYAVELGKNQAKFSLVGIGGQDLNEGNRT L TLALIWQLMRRYTLNILEEIGGGQKVNDDIIVNWVNETLREAESSISSFKDPKISTSLPVLDLIDAIQ PGSINYDLLKTENLNDDEKLNNAKYAISMARIGARVYALPEDLVEVNPKMVMVTVFACLMGKGMKRV TR TRPLEQKLISEEDLAANDILDYKDDDDKV
Tag:	C-Myc/DDK
Predicted MW:	70.1 kDa
Concentration:	>0.05 µg/µL as determined by microplate BCA method
Purity:	> 80% as determined by SDS-PAGE and Coomassie blue staining
Buffer:	25 mM Tris-HCl, 100 mM glycine, pH 7.3, 10% glycerol
Bioactivity:	Enzyme substrate (PMID: 25881549)
Preparation:	Recombinant protein was captured through anti-DDK affinity column followed by conventional chromatography steps.
Note:	For testing in cell culture applications, please filter before use. Note that you may experience some loss of protein during the filtration process.


[View online »](#)

Storage:	Store at -80°C.
Stability:	Stable for 12 months from the date of receipt of the product under proper storage and handling conditions. Avoid repeated freeze-thaw cycles.
RefSeq:	<u>NP_002289</u>
Locus ID:	3936
UniProt ID:	<u>P13796</u>
RefSeq Size:	3808
Cytogenetics:	13q14.13
RefSeq ORF:	1881
Synonyms:	CP64; HEL-S-37; L-PLASTIN; LC64P; LPL; PLS2
Summary:	<p>Plastins are a family of actin-binding proteins that are conserved throughout eukaryote evolution and expressed in most tissues of higher eukaryotes. In humans, two ubiquitous plastin isoforms (L and T) have been identified. Plastin 1 (otherwise known as Fimbrin) is a third distinct plastin isoform which is specifically expressed at high levels in the small intestine. The L isoform is expressed only in hemopoietic cell lineages, while the T isoform has been found in all other normal cells of solid tissues that have replicative potential (fibroblasts, endothelial cells, epithelial cells, melanocytes, etc.). However, L-plastin has been found in many types of malignant human cells of non-hemopoietic origin suggesting that its expression is induced accompanying tumorigenesis in solid tissues. [provided by RefSeq, Jul 2008]</p>

Product images:



Coomassie blue staining of purified LCP1 protein (Cat# TP301670). The protein was produced from HEK293T cells transfected with LCP1 cDNA clone (Cat# [RC201670]) using MegaTran 2.0 (Cat# [TT210002]).