

Product datasheet for **TP301666**

Thioredoxin 2 (TXN2) (NM_012473) Human Recombinant Protein

Product data:

Product Type:	Recombinant Proteins
Description:	Recombinant protein of human thioredoxin 2 (TXN2), nuclear gene encoding mitochondrial protein, 20 µg
Species:	Human
Expression Host:	HEK293T
Expression cDNA Clone or AA Sequence:	>RC201666 protein sequence Red =Cloning site Green =Tags(s)
	 MAQRLLRRFLASVISRKPSQGQWPPLTSRALQTPQCSPGGLVTPNPARTIYTTRISLTTFNIQDGPDF QDRVNSETPVVDFHAQWCGPCKILGPRLEKMVAKQHGKVVMAKVDIDDHTDLAIEYEVSAVPTVLAMK NGDVVDKFBVGIKDEDQLEAFLKLLIG TRTRPLEQKLISEEDLAANDILDYKDDDDKV
Tag:	C-Myc/DDK
Predicted MW:	11.8 kDa
Concentration:	>0.05 µg/µL as determined by microplate BCA method
Purity:	> 80% as determined by SDS-PAGE and Coomassie blue staining
Buffer:	25 mM Tris-HCl, 100 mM glycine, pH 7.3, 10% glycerol
Preparation:	Recombinant protein was captured through anti-DDK affinity column followed by conventional chromatography steps.
Note:	For testing in cell culture applications, please filter before use. Note that you may experience some loss of protein during the filtration process.
Storage:	Store at -80°C.
Stability:	Stable for 12 months from the date of receipt of the product under proper storage and handling conditions. Avoid repeated freeze-thaw cycles.
RefSeq:	NP_036605
Locus ID:	25828
UniProt ID:	Q99757



[View online »](#)

RefSeq Size: 1342

Cytogenetics: 22q12.3

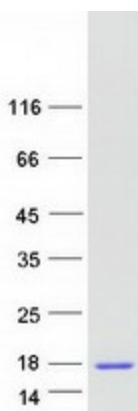
RefSeq ORF: 498

Synonyms: COXPD29; MT-TRX; MTRX; TRX2; TXN

Summary: This nuclear gene encodes a mitochondrial member of the thioredoxin family, a group of small multifunctional redox-active proteins. The encoded protein may play important roles in the regulation of the mitochondrial membrane potential and in protection against oxidant-induced apoptosis. [provided by RefSeq, Jul 2008]

Protein Families: Druggable Genome

Product images:



Coomassie blue staining of purified TXN2 protein (Cat# TP301666). The protein was produced from HEK293T cells transfected with TXN2 cDNA clone (Cat# [RC201666]) using MegaTran 2.0 (Cat# [TT210002]).